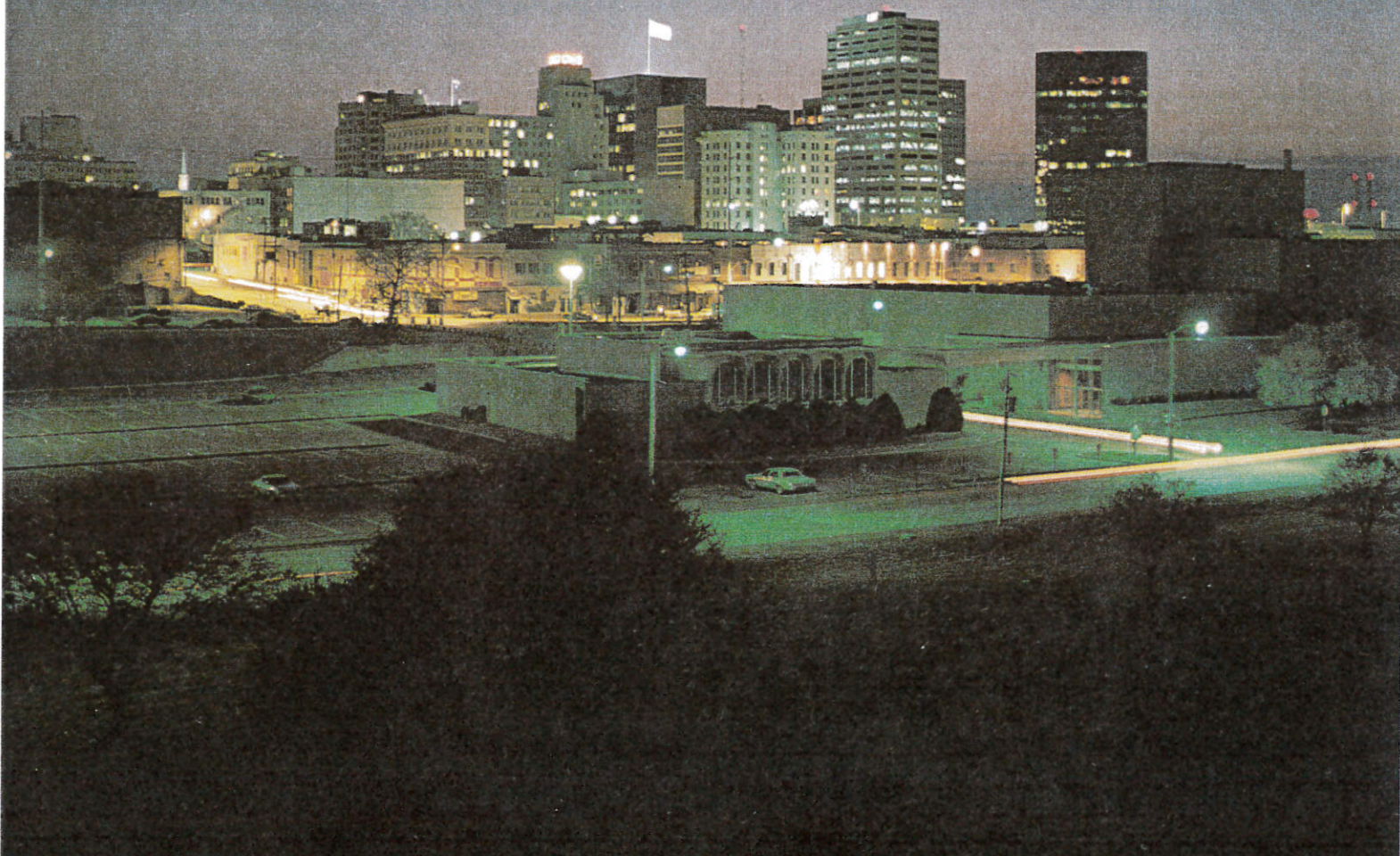


GULF COAST ASSOCIATION OF GEOLOGICAL SOCIETIES

TRANSACTIONS OF THE

34th Annual Meeting

GCAGS & GCS-SEPM



SHREVEPORT, LOUISIANA

OCTOBER 24, 25, 26, 1984



CONCORD OIL COMPANY

WELCOMES SUBMITTALS OF:

OVERRIDING ROYALTIES

PRODUCING ROYALTIES

TAX FREE EXCHANGES

WORKING INTERESTS

JOINT VENTURES

MINING LEASES

FEE LANDS

PLEASE CALL OR WRITE:

PETER BAUERLEIN
FRITZ HOLMSTROM

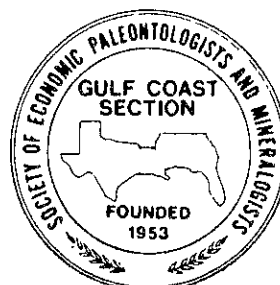
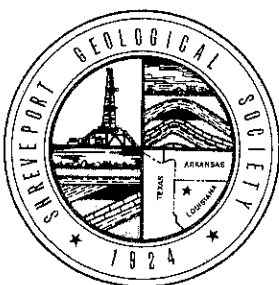
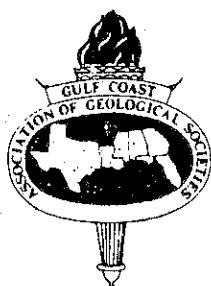
REAGAN MCCOY
T.E. PAIVEL

CONCORD OIL COMPANY

1500 ALAMO NATIONAL BLDG.
SAN ANTONIO, TEXAS 78205
(512) 224-4455

TRANSACTIONS
GULF COAST ASSOCIATION OF GEOLOGICAL SOCIETIES

A SECTION OF THE AMERICAN ASSOCIATION OF PETROLEUM GEOLOGISTS



VOLUME XXXIV, 1984

B. ROSS WHITE
Editor

PREPARED FOR THE
Thirty-fourth Annual Meeting of the
Gulf Coast Association of Geological Societies
AAPG REGIONAL MEETING
AND
The Thirty-first Annual Meeting of the
GULF COAST SECTION OF THE
SOCIETY OF ECONOMIC PALEONTOLOGISTS AND
MINERALOGISTS

ROBERT KIER
SEPM Editor

OCTOBER 24-25-26, 1984

Published at
Shreveport, Louisiana

Copyright 1984 by the Gulf Coast Association of Geological Societies
No reproduction without permission of the President of GCAGS

Dedication of the 1984 GCAGS Transactions Volume To



James M. Forgotson, Sr.

The Executive Committee of the GCAGS dedicates this Volume XXXIV of the 1984 *Transactions* to James M. Forgotson. He is a pioneer explorationist who has been a long time resident of Shreveport, Louisiana and is responsible for many of the significant oil and gas discoveries in the Ark-La-Tex during the past 60 years. The GCAGS is proud to honor this pioneer of petroleum geology who is still actively applying his geological knowledge and experience to the exploration for oil and gas in this area.

Jim Forgotson is a man whose life and philosophies have been influenced by two eras in the history of oil and gas exploration; he has gleaned and combined the best from "the old wildcaters" and modern technology to aid his search for oil and gas reserves.

He was born on December 12, 1899 in Forth Worth, Texas. Shortly thereafter, his family moved to Lawton, Indian territory. He attended grammar school and high school in St. Louis, Missouri, and while in grammar school he started to collect insects, plants, and rocks for the classroom; an early indication of his love for natural science.

After his graduation from high school in 1916, he borrowed \$100 to enter the Missouri School of Mines and Metallurgy at Rolla from which he graduated in 1922 with a Bachelor of Science degree in Mining Engineering.

From the beginning he was a wildcatter. He was part of that alluring era in the oil business when most of the oil had yet to be discovered; before the development of modern techniques of exploration, and when geological knowledge of the sub-surface was scant to non-existent. The haunting spell of wildcatting put the mind and imagination of the oil man against high odds, but Jim had an eye for surface geology and its significance and a feel for finding oil. "I never had any security," he reminisced, "but I wouldn't have known what to do with it had I had it."

Following his junior year in college, he worked one month for the Louisiana Oil Refining Corporation in Shreveport, then went on his own and mapped the surface geology of parts of Arkansas and North Louisiana. This work led to the acquisition of a block of acreage in Webster Parish, Louisiana which was promoted to the Sinclair Oil Company for the drilling of a well which was the discovery well of the Shongaloo field. Several shallow wells, none deeper than 3,500', were also drilled on prospects that he mapped in Arkansas. Although these wells were non-productive, they were important in determining the Cretaceous stratigraphy in Hempstead, Nevada, and Ouachita Counties in areas where

production was discovered later by others. Jim then returned to school and obtained his degree.

After graduation he returned to Shreveport and worked with J.P. Evans, Triangle Drilling Company, O'Brien Brothers, J.K. Wadley, and others. His early stamina and wit led to various discoveries. He bought the acreage for Fortuna Oil Company which was their source of gas from the Shongaloo field to supply the Magnolia refinery on the coast of Texas near Houston. This gas was transported through the first long distance, large diameter pipeline. He was co-discoverer with Triangle Drilling Company of the Sugar Creek field, and he did the surface work and drilled a well which led to the discovery of the Gibbsland Salt Dome.

Jim then went to New Mexico in 1925 to evaluate properties of the New Mexico-Arizona Land Company. He did surface work on these properties and drilled a well through the granite wash at Suwanee in Valencia County, New Mexico about 45 miles west of Albuquerque. This well had shows of oil and gas but was non-commercial. He then worked for the United States Coast and Geodetic Survey on secondary triangulation and for the Rio Grande Conservation District as geologist and engineer on the construction of El Vado Dam near Chama, New Mexico. Following that he did the geological work for the Department of Indian Affairs developing fresh water on the Navajo, Zuni, Hopi, Mescalero Apache reservations, and on part of the Ute Reservation.

Jim returned to Shreveport in 1935 and, as an independent geologist, was instrumental in helping to develop the western part of the Delhi field and made several discoveries; Baker, Lamar, and Turkey Creek, that opened up the first Tuscaloosa production south of the Delhi field. He also made several discoveries in the Cotton Valley trend of Lincoln Parish, Louisiana during the early 1940's.

During the middle and late 1940's, Jim also worked with William Barrett of Shreveport, Louisiana to demonstrate the application of radio prospecting in the exploration for metallic ores. Work was conducted in southeastern Missouri for National Lead Company and St. Joseph's Mining Company that successfully outlined large lead deposits. Major pyrite deposits were also successfully outlined for Tennessee Coal and Iron in the Duck Creek area of Tennessee. In the 1950's, he worked on the problems of combining gravity data with aerial magnetic survey data to recognize and interpret structural forms and depositional differences. He also worked with Eugene Rosaire on the problems of critical seismic velocity changes within a short horizontal distance.

At the age of 60 Jim retired but only for a few weeks. He found that he "was very unhappy if not actively working in the oil business." To overcome this problem, he began a joint project with Roy Hazzard, who had recently retired from the geological staff of the Gulf Oil Company, to conduct surface and sub-surface studies in the Val Verde Basin area of Texas. This work led to the drilling of a deep, unsuccessful wildcat. At that time, he accepted an interest in and the management of Morris and Burk and continued to apply his experience and talent to build that company and its successors into a significant independent oil and gas operation. The first discovery made for this company was the North Big Island field in Rapides Parish, Louisiana. This was followed by additional oil discoveries in the Iota field of Acadia Parish and the Bayou Bouillon area in St. Martin Parish, Louisiana. In the next few years he was responsible for several other field discoveries and extensions in South Louisiana and South Texas. During the 1960's, he was also involved in exploration and exploratory drilling in western Canada and Ohio.

During the late 1960's, Jim developed the concept of exploring for "porosity pods" in the Cotton Valley and Hosston Formations of East Texas. This exploration concept, combined with his persuasion of the Texas Railroad Commission to allow co-mingling of all sweet gas produced from the base of the Sligo Formation to the base of the Cotton Valley Group, was instrumental in developing the tight gas sand play in East Texas and elsewhere. As a result of this exploration program, the Oak Hill, Southwest Tatum, Rosewood, Sabine, Easton, and South Hallsville fields were discovered during the late 1960's and early 1970's. All of these fields produced from tight gas sands in the lower part of the Cotton Valley Schuler Formation. In connection with the early exploration efforts directed toward tight gas production from the Cotton Valley sands, he worked closely with major oil field service companies in the development of fracturing technology to enhance production from tight formations. He patented and placed in the Public Domain a method of evaluation of electric well logs particularly suited to the interpretation of low porosity and permeability gas reservoirs. He also developed and published in connection with Schlumberger a method for predetermining the direction in which an artificially stimulated hydraulic fracture would propagate. These technical contributions demonstrated his unique ability to follow a concept from the exploratory stage through the development and production phases reminiscent of the early days of the industry in which a single individual was often responsible for all aspects of the business from leasing through production. His willingness to place the patent and other developments in the Public Domain rather than use them for personal financial reward exemplifies one of the facets of Jim's character appreciated by all who know him. Perhaps this is one reason he so loves the oil business. "I want to *do* something," he asserts. "If we win, we have created something useful. If we lose, a dry hole is also an accomplishment — it has given us knowledge." During the last few years, he has continued to actively develop prospects in East Texas and North Louisiana and has expanded his geological interest to include the Uinta Basin and other areas in Utah and Wyoming.

His philosophies remain unchanged through 65 years of wildcatting on high risk acreage, but his methodologies and techniques are a unique combination of two eras in exploration. He interprets the latest geophysical data in the context of surface and sub-surface geology. He has the experience to evaluate both the old and the new and the wisdom to incorporate the best of two worlds into his exploration programs.

During the course of Jim's active career as a successful exploration geologist, he has maintained a strong interest in the scientific application of geological principles and particularly in the field of stratigraphic and geological nomenclature. He has found time during his busy career to publish singularly or jointly with his older son papers on the Cretaceous and Jurassic stratigraphy and structure of North Louisiana, East Texas, and Mississippi. His publications have emphasized the proper usage of stratigraphic nomenclature, and he has been responsible for naming and defining various Cretaceous and Jurassic Formations of the upper Gulf Coast. His publications have stressed the identification and proper position of unconformities in the Cretaceous and Jurassic section and the relationship of these unconformities to regional and local structure.

Mr. Forgotson is an active member of the American Association of Petroleum Geologists-(AAPG)-since 1923, Geological Society of America (GSA), Society of Economic Paleontologists and Mineralogists (SEPM), Society of Petroleum Engineers (SPE), American Institute of Mining Engineers (AIME), Society of Exploration Geophysicists (SEG), Society of Professional Well Log Analysts (SPWLA), Shreveport Well Logging Society, American Geophysical Union, Shreveport Geological Society, Rocky Mountain Association of Geologists, Albuquerque Geological Society, West Texas Geological Society, New Mexico Geological Society, American Association of Petroleum Geologists Trust Associates, Association of Professional Geological Scientists, American Institute of Professional Geologists (AIPG), American Petroleum Institute (API), Texas Independent Producers & Royalty Owners, Louisiana Association of Independent Producers & Royalty Owners, and the Shreveport Petroleum Club.

In 1983, Jim received an Alumni "Award of Merit" from the University of Missouri at Rolla.

Jim is almost 85 years old. Will he consider retirement? "No!" he emphatically answered as he pounded his fist on the drafting table. "The idea of retirement is wrong! Idleness is the worst thing in the world for a human being. No man is old enough to retire!"

Dedication of the 1984 GCAGS Transactions Volume To



William M. Plaster

This volume XXXIV of the *GCAGS Transactions* for the Convention of 1984 is dedicated to William M. Plaster, Independent Petroleum Geologist of Shreveport, Louisiana. For more than 50 years, he has demonstrated his outstanding abilities as a subsurface geologist, and his efforts have resulted in the discovery and development of many oil and gas reserves over a four state area. In oil circles, his energy and optimism are well known. His accomplishments are making him a legend in his own time.

Bill Plaster was born January 11, 1905, in Chandler, Oklahoma, 40 miles northeast of Oklahoma City. He received his B.S. degree in geology from the University of Oklahoma at Norman in 1929. In 1930, he married his high school classmate, Opal Lucile Reding of Meeker, Oklahoma.

Since his graduation from college, Bill has followed the career of a petroleum geologist except for a short period as a farmer in the early 1930's. Aside from his employment with the Arkansas Geological Survey and the U.S. Geological Survey in 1932 and 1933, he worked solely for major and independent oil companies through the years 1930 to 1948.

While he was employed by various oil companies, he was mainly responsible for discoveries and extensions of several oil and gas fields; including Stephens, Gum Creek, Bear Creek, Pace City and Dorcheat-Macedonia fields in South Arkansas; and Lisbon, Haynesville, Benton and Pine Island fields in North Louisiana. Since 1948 he has been operating for his own interests and as a consultant over extensive areas in Oklahoma, Kansas, Texas, New Mexico, Arkansas, Louisiana and Mississippi.

During his years as an independent geologist he has been chiefly responsible for the discovery or extension of many oil and gas fields in these areas. They include in Louisiana: the Tokio Oil Sand of the Bellevue field, the Greenwood Cotton Valley "D" Sand gas field, the North Big Island Wilcox Formation oil field, and the Ten Mile Bayou Paluxy Formation oil field; in Arkansas: the Kress City Smackover lime field and the St. Mary Mitchell Sand oil field; in Texas: the Crane Limestone member of the Pettit Formation, a stratigraphic trap covering over 12,000 acres of gas reserves underlying portions of several parishes and counties along the state line area of northwest Louisiana and east Texas.

Mr. Plaster is a member of the Independent Petroleum Association of America, the International Oil Scouts Association, the Society of Petroleum Engineers, the Texas Independent Producers and Royalty Owners Association, the Independent Petroleum Association of America and the Shreveport Petroleum Club. He is a Registered Professional Engineer of Texas. He became an honorary member of the Shreveport Geological Society in 1981 and is also a 55-year member of the American Association of Petroleum Geologists. His principal interest outside of his home and profession are his beds of prize-winning camellias and azaleas. He is a member of the Shreveport Camellia Club and vice-president of that organization. He is also a member of the American Camellia Society.

TABLE OF CONTENTS

	Page
TITLE PAGE	I
DEDICATION TO JAMES M. FORGOTSON, SR.	II
DEDICATION TO WILLIAM M. PLASTER	IV
OFFICERS AND EXECUTIVE COMMITTEE, GCAGS	X
OFFICERS OF MEMBER SOCIETIES, GCAGS	XI
REPORT OF PRESIDENT, GCAGS, John T. Palmer	XIII
OTHER OFFICERS, GCAGS	XIV
REPORT OF THE GENERAL CHAIRMAN, James M. Forgotson, Jr.	XV
REPORT OF THE EDITOR, B. Ross White	XVI
REPORT OF THE PROGRAM CHAIRMAN, Nolan G. Shaw	XVII
STANDING COMMITTEES, GCAGS	XVIII
ORGANIZATION, THIRTY-FOURTH ANNUAL MEETING	XIX
REPORT OF THE GCAGS FINANCIAL-AID-TO-STUDENTS COMMITTEE — 1984	XXI
BEST PAPER AWARDS, GCAGS THIRTY-THIRD ANNUAL MEETING	XXII
CONSTITUTION AND BY-LAWS, GCAGS	XXIV
PAST OFFICERS AND CONVENTION CHAIRMEN, GCAGS	XXVI
HONORARY MEMBERSHIPS, GCAGS	XXVII
DISTINGUISHED SERVICE AWARDS, GCAGS	XXIX
OFFICERS AND CONVENTION COMMITTEE CHAIRMEN, GCS-SEPM	XXX
REPORT OF THE PRESIDENT, GCS-SEPM, Don Bebout	XXXI
BEST PAPER AWARDS, GCS-SEPM THIRTIETH ANNUAL MEETING	XXXII
CONSTITUTION AND BY-LAWS, GCS-SEPM	XXXIII
HONORARY MEMBERSHIPS, GCS-SEPM	XXXVI
PAST HONORARY MEMBERS, GCS-SEPM	XXXIX
PAST OFFICERS, GCS-SEPM	XL
PUBLICATIONS OF GCAGS	XLI
PUBLICATIONS OF GCS-SEPM	XLII
PUBLICATIONS ORDER FORM, GCAGS AND GCS-SEPM	XLIII
ADVERTISERS INDEX	477

**TECHNICAL PAPERS AND ABSTRACTS
GCAGS**

THE BROWN DOLOMITE ZONE OF THE LEHIGH ACRES FORMATION (APTIAN) IN THE SOUTH FLORIDA BASIN — A POTENTIALLY PROLIFIC PRODUCING HORIZON OFFSHORE by Albert V. Applegate	1
INTERNAL GEOMETRY AND RESERVOIR POTENTIAL OF SOME MODERN CREVASSE SPLAY SANDS (Abstract) by Kevin W. Bowles and Thomas F. Moslow	7
DEPOSITIONAL AND STRUCTURAL RECONSTRUCTION OF SOUTHWESTERN LOUISIANA OLIGO-MIOCENE STRATA: A TEMPORAL-SPATIAL APPROACH by Steven R. Brunhild	9
EXPLORATION AND DEVELOPMENT — GULF COAST TERTIARY — 1983 (Abstract) by William C. Eisenhardt and Harry T. Holzman	33

	Page
DEPOSITIONAL CONTROLS ON POROSITY AND PERMEABILITY EVOLUTION IN THE UPPER SMACKOVER FORMATION AT TUBAL FIELD, SOUTH ARKANSAS by Larry G. Frizzell	35
OIL AND GAS PROSPECTS IN THE ARKANSAS OUACHITAS (Abstract) by John A. Gray and Art Pyron	47
THE COMPUTERIZED PARTICLE SIZE ANALYZER: AN EXPLORATION TECHNIQUE, ST. MARY FIELD, LAFAYETTE COUNTY, ARKANSAS by Thomas L. Ham and Raymond P. Bruce	49
VARIATION IN THE CHEMICAL COMPOSITION OF OIL-FIELD BRINES WITH DEPTH IN NORTHERN LOUISIANA AND SOUTHERN ARKANSAS: IMPLICATIONS FOR MECHANISMS AND RATES OF MASS TRANSPORT AND DIAGENETIC REACTION by Jeffrey S. Hanor	55
THE FORMULATION OF A DEVELOPMENT STRATEGY FOR A RODESSA GAS PLAY IN EASTERN DESOTO PARISH, LOUISIANA by Russell B. Hennessey and Victoria Provenza	63
PETROLOGY AND DEPOSITIONAL ENVIRONMENT OF THE MITCHELL MEMBER, RODESSA FORMATION (LOWER CRETACEOUS) WEST BRADLEY FIELD, LAFAYETTE COUNTY, ARKANSAS (Abstract) by Donald Lee Huguley, Jr.	67
IDENTIFICATION OF SHORT-TERM CHANGES IN SEDIMENT DEPOSITIONAL RATES: IMPORTANCE IN ENVIRONMENTAL ANALYSIS AND IMPACT INVESTIGATIONS by Wayne C. Isphording, F. Dewayne Imsand, and Gregory W. Isphording	69
BASEMENT STRUCTURE OF THE GULF COAST; INTERPRETATION OF GRAVITY ANOMALIES SUPPORTED WITH STRUCTURAL, MAGNETIC AND SEISMIC DATA by Gary L. Kinsland	85
A NEW REFERENCE LOCALITY FOR THE SARATOGA CHALK, HOWARD COUNTY, ARKANSAS by Randal J. Landry	95
AN EVALUATION OF THE CATAHOULA FORMATION AS A URANIUM SOURCE ROCK IN EAST TEXAS by E.B. Ledger, T.T. Tieh, and M.W. Rowe	99
SEISMIC SIGNATURES OF SERPENTINE PLUGS IN THE MAVERICK BASIN by J.O. Lewis	109
SEDIMENT DISTRIBUTION AROUND SALT DOMES AND RIDGES ON THE LOUISIANA SLOPE by Allen Lowrie	123
PALEOENVIRONMENTS AND HYDROCARBON POTENTIAL OF THE UPPER JURASSIC NORPHLET FORMATION OF SOUTHWESTERN AND OFFSHORE ALABAMA by Ernest A. Mancini, Robert M. Mink and Bennett L. Bearden	131
RULES OF SANDSTONE DIAGENESIS RELATED TO RESERVOIR QUALITY (Expanded Abstract) by Earle F. McBride	137
THE SOUTHWESTWARD EXTENSION OF THE VICKSBURG-JACKSON SHALE RIDGE, REFUGIO AND ARANSAS COUNTIES, TEXAS by James A. McCarthy	141
PETROLOGY AND DEPOSITIONAL ENVIRONMENT OF THE SUNNILAND PRODUCING FIELDS OF SOUTH FLORIDA by Hugh J. Mitchell-Tapping	157
SUBMARINE FAN SEDIMENTATION, OUACHITA MOUNTAINS, ARKANSAS AND OKLAHOMA by R.J. Moiola and G. Chanmugam	175
DEEP-BASIN LIGNITE IN NORTHWEST LOUISIANA by Harold D. Nilsson	183
GEOLOGY AND GEOPHYSICS OF SOUTH CENTRAL ZAVALA AND ADJOINING PARTS OF DIMMIT COUNTIES, TEXAS by James A. Noel	187
A GEOLOGICAL STUDY OF THE EXPLORATION TECHNIQUES APPLIED TO THE PALUXY FORMATION IN THE WEST TYLER AREA OF SMITH COUNTY, TEXAS (Abstract) by Robert E. Osborne, II and Percy J. Wheeler	199
GEOLOGY OF THE DE QUEEN FORMATION OF ARKANSAS by Jeffrey G. Pittman	201
STRATIGRAPHY AND SEDIMENTOLOGY OF THE KINCAID FORMATION, MIDWAY GROUP (PALEOCENE), UPPER RIO GRANDE EMBAYMENT, TEXAS by Edward C. Roy, Jr.	211
DEPOSITIONAL AND DIAGENETIC HISTORY OF THE BODCAW SAND, COTTON VALLEY GROUP (UPPER JURASSIC), LONGWOOD FIELD, CADDO PARISH, LOUISIANA by Billy Joe Russell Jr., Austin A. Sartin and Ernest B. Ledger	217

	Page
PETROLEUM GEOLOGY OF THE EAST DYKESVILLE FIELD, SMACKOVER "C" SAND, CLAIBORNE AND WEBSTER PARISHES, LOUISIANA by C. Lane Sartor and Stephen R. Howard	229
THE INTERNAL FRAMEWORK OF THE SOUTHWESTERN FLORIDA BANK by F. Jeanne Shaub	237
DEPOSITION, COMPACTION, AND MINERALOGICAL ALTERATION OF MIOCENE SANDSTONES, SOUTH LOUISIANA by Richard L. Smith and Thomas T. Tieh	247
VALIDITY OF THE USE OF THE SPONTANEOUS POTENTIAL CURVE SHAPE IN THE INTERPRETATION OF SANDSTONE DEPOSITIONAL ENVIRONMENTS by John W. Snedden	255
EARLY OPENING OF INITIALLY-CLOSED GULF OF MEXICO AND CENTRAL NORTH ATLANTIC OCEAN by DeWitt C. Van Siclen	265
SEDIMENTOLOGY OF THE UPPER CRETACEOUS COFFEE SANDS IN NORTH CENTRAL MISSISSIPPI by E.J. Webb	277
MINERALOGICAL AND CHEMICAL ALTERATIONS IN ILLITE/SMECTITE FROM WILCOX SHALES DURING BURIAL by John D. Whynot, David W. Moore and Thomas T. Tieh	287

TECHNICAL PAPERS AND ABSTRACTS

Gulf Coast Section of SEPM

GEOLOGIC SIGNIFICANCE OF LAND SUBSIDENCE AT JEFFERSON ISLAND, LOUISIANA by Whitney J. Autin	293
OSTRACODE BIOSTRATIGRAPHY AND PALEOECOLOGY OF THE UPPER TAYLOR GROUP (CAMPANIAN, UPPER CRETACEOUS) IN CENTRAL TEXAS by Julius Baum Chimene II, and Rosalie F. Maddocks	311
THE SURFACE FORMATIONS OF THE TRINITY GROUP IN SOUTHWESTERN ARKANSAS, AND A PROPOSED REVISION OF STRATIGRAPHIC RANK FOR THE THREE LOWER UNITS by Bruce K. Darling and Brian E. Lock	321
OIL SOURCE BEDS AND OIL PROSPECT DEFINITION IN THE UPPER TERTIARY OF THE GULF COAST by Wallace G. Dow	329
THERMAL AND DIAGENETIC HISTORY OF THE PLEASANT BAYOU - CHOCOLATE BAYOU AREA, BRAZORIA COUNTY, TEXAS by Thomas E. Ewing, Malcolm P.R. Light, and Noel Tyler	341
MICROFACIES AND POROSITY IN THE SLIGO FORMATION OF THE VIVIAN FIELD, CADDO PARISH, LOUISIANA (Abstract) by Stephen J. Folzenlogen	349
TRANSMISSION ELECTRON MICROSCOPE STUDY OF ILLITE/SMECTITE, GCO/DOE #1 PLEASANT BAYOU GEOPRESSURED GEOTHERMAL TEST WELL, BRAZORIA COUNTY, TEXAS (Abstract) by R.L. Freed and D.R. Peacor	355
SURFACE EXPOSURES OF LATE CRETACEOUS STRATA AT THE RAYBURNS SALT DOME, BIENVILLE PARISH, LOUISIANA by Robert C. Frey and Richard D. Kaiser	357
COMPARISON OF CLAY MINERALOGY OF LATE QUATERNARY BACK-BARRIER AND BARRIER SEDIMENTS, SOUTH TEXAS COAST by C. Wm. Keighin and R.M. Flores	363
A STUDY OF THE MORPHOLOGY AND DIOPTRICS OF SOME OSTRACODE EYESPOTS by Mervin Kontrovitz and John H. Myers	369
CHANNELS IN RESEDIMENTED CHALKS, CRETACEOUS GULF COASTAL PROVINCE OF TEXAS AND MEXICO by Brian E. Lock	373
SOURCES AND DISTRIBUTION OF SILT, SOUTH TEXAS SHELF (Abstract) by Jim Mazzullo and Jeffrey Crisp	383
RECENT FORAMINIFERA OF ST. ANDREW BAY, FLORIDA by Linda S. Mechler and John R. Grady	385
DETRITAL COMPOSITION OF PLIO-PLEISTOCENE SANDS, OFFSHORE LOUISIANA (Abstract) by Kitty Lou Milliken	395
PROCESS-RESPONSE MODELS FOR GULF COAST BARRIER ISLAND BREACHING by Shea Penland and John R. Suter	397

	Page
THE GIBSLAND SALT STOCK FAMILY IN NORTHWESTERN LOUISIANA by Alva E. Saucier	401
DOLOMITIZATION BY GROUNDWATER-FLOW SYSTEMS IN CARBONATE PLATFORMS by Michael Simms	411
PETROLOGY OF LOWER AND MIDDLE EOCENE CARBONATE ROCKS, FLORIDAN AQUIFER, CENTRAL FLORIDA by Paul A. Thayer and James A. Miller	421
METALLIC SULFIDE DEPOSITS IN THE WINNFIELD SALT DOME, LOUISIANA: EVIDENCE FOR EPISODIC INTRODUCTION OF METALLIFEROUS BRINES DURING CAP-ROCK FORMATION by Mark R. Ulrich, J. Richard Kyle, and Peter E. Price	435

JURASSIC OF EAST TEXAS

Symposium Abstracts and Paper

JURASSIC EXPLORATION TRENDS OF EAST TEXAS (Introduction) by Mark W. Presley and Chris H. Reed	443
RECENT JURASSIC DISCOVERIES IN SOUTHEASTERN CASS COUNTY, TEXAS by John C. Aubrey	445
THE DOMES OF EAST TEXAS (Abstract) by M.P.A. Jackson and Steven J. Seni	453
REGIONAL PATTERNS OF DIAGENESIS, POROSITY EVOLUTION, AND HYDROCARBON PRODUCTION, UPPER SMACKOVER OF THE GULF RIM (Abstract) by Clyde H. Moore	455
SMACKOVER AND HAYNESVILLE FACIES RELATIONSHIPS IN NORTH-CENTRAL EAST TEXAS (Abstract) by Sara K. Stewart	457
DIAGENESIS OF A TIGHT GAS FORMATION: THE JURASSIC COTTON VALLEY SANDSTONE, EAST TEXAS BASIN (Abstract) by William A. Wescott	459
THE COTTON VALLEY SANDSTONE OF EAST TEXAS: A LOG-CORE STUDY (Abstract) by D.A. Wilson and W.M. Hensel, Jr.	461

MICROCOMPUTER POSTER SESSION

Abstracts

A PERSONAL COMPUTER AS THE HEART OF A GEOLOGIC AND ENGINEERING WORK STATION by Richard B. Banks	463
SEISMIC STRATIGRAPHY ON A MICRO BUDGET by Thomas M. Clark	465
OIL AND GAS ECONOMIC ANALYSIS WITH VISICALC by Mark A. Clement	467
RAPID AUTOMATED POSTING OF SUBSURFACE DATA ON A MICROCOMPUTER SYSTEM by Marc B. Edwards	469
CONTOUR MAPPING USING A MICROCOMPUTER-TECHNIQUES FOR IMPROVING THROUGHPUT by Mark A. Herkommer	471
INTERACTIVE GEOLOGIC MODELLING by Stephen A. Krajewski, Ron Budros and J. Douglas Glaeser	473
A MICROCOMPUTER LOG ANALYSIS SYSTEM by Charles Ostrander	475

GULF COAST ASSOCIATION OF GEOLOGICAL SOCIETIES

PRESIDENT John T. Palmer
Palmer Petroleum, Inc., Shreveport, Louisiana

VICE PRESIDENT Dr. E.G. Wermund
Bureau Economic Geology, Austin, Texas

SECRETARY Charles S. Cook
Shreveport Exploration Co., Shreveport, Louisiana

TREASURER Erwin W. Saye
Saye Oil Co., Shreveport, Louisiana

EXECUTIVE COMMITTEE

ALABAMA GEOLOGICAL SOCIETY Charles W. Copeland
Geological Survey of Alabama
Tuscaloosa, Alabama

AUSTIN GEOLOGICAL SOCIETY Doug Ratcliff
The University of Texas
Austin, Texas

BATON ROUGE GEOLOGICAL SOCIETY David E. Pope
Louisiana Geological Survey
Baton Rouge, Louisiana

CORPUS CHRISTI GEOLOGICAL SOCIETY Curtis R. Mayo
Fargo Trading Co.
Corpus Christi, Texas

EAST TEXAS GEOLOGICAL SOCIETY Christopher H. Reed
Reed & Strawn Expl. Cons.
Tyler, Texas

HOUSTON GEOLOGICAL SOCIETY Matthew W. Daura
Transcontinental Gas Pipe Line Corporation
Houston, Texas

LAFAYETTE GEOLOGICAL SOCIETY John S. Rives, II
Conoco, Inc.
Lafayette, Louisiana

MISSISSIPPI GEOLOGICAL SOCIETY C. Kipp Ferns
ANR Production Company
Jackson, Mississippi

NEW ORLEANS GEOLOGICAL SOCIETY Robert W. Sabate
Koch Exploration Co.
New Orleans, Louisiana

SHREVEPORT GEOLOGICAL SOCIETY W. David Hart
Caruthers Producing Co.
Shreveport, Louisiana

SOUTHEASTERN GEOLOGICAL SOCIETY Walter Schmidt
Florida Geological Survey
Tallahassee, Florida

SOUTH TEXAS GEOLOGICAL SOCIETY Raymond T. Jones
Bright & Company
San Antonio, Texas

OFFICERS OF MEMBER SOCIETIES

GULF COAST ASSOCIATION OF GEOLOGICAL SOCIETIES

ALABAMA GEOLOGICAL SOCIETY, P.O. Box 6184, University, Alabama 35486

PRESIDENT..... Karen F. Rheams, Geological Survey of Alabama
 VICE PRESIDENT..... Scott Brande, University of Alabama
 SECRETARY..... Charles W. Copeland, Geological Survey of Alabama
 SECRETARY..... Kit E. Richter, Geological Survey of Alabama
 TREASURER..... Michael W. Szabo, Geological Survey of Alabama

AUSTIN GEOLOGICAL SOCIETY, P.O. Box 1302, Austin, Texas 78767

PRESIDENT..... Doug Ratcliff, Bureau of Economic Geology
 VICE-PRESIDENT..... Harold Billman, Consultant
 SECRETARY..... Felicia Boyd, Harden and Associates
 TREASURER..... John Ashworth, Texas Department of Water Resources

BATON ROUGE GEOLOGICAL SOCIETY, P.O. Box 19151, Baton Rouge, Louisiana 70893

PRESIDENT..... Darwin Knochenmus, U.S. Geological Survey
 VICE-PRESIDENT..... Louise S. Durham, Consultant
 SECRETARY..... Brenda A. David, Louisiana Geological Survey
 TREASURER..... Dr. Richard Kesel, Louisiana State University

CORPUS CHRISTI GEOLOGICAL SOCIETY, P.O. Box 1068, Corpus Christi, Texas 78403

PRESIDENT..... Curtis R. Mayo, Fargo Trading Co.
 1ST VICE-PRESIDENT..... Gerry Heinzelmann, American Petrofina
 2ND VICE-PRESIDENT..... John Drake, Harkins & Co.
 SECRETARY..... Duncan Chisholm, Suemar
 TREASURER..... Julie Moore, American Petrofina

EAST TEXAS GEOLOGICAL SOCIETY, P.O. Box 216, Tyler, Texas 75701

PRESIDENT..... Mark Presley, Valero Producing Company
 VICE-PRESIDENT..... Scott Shaver, Locklin Oil Co.
 SECRETARY/TREASURER..... Jim Denney, Delta Drilling Co.

HOUSTON GEOLOGICAL SOCIETY, 6916 Ashcroft, Houston, Texas 75701

PRESIDENT..... Gerald A. Cooley, Phillips Petroleum Co.
 PRESIDENT-ELECT..... W.N. "Mac" McKinney, Aminoil USA
 VICE-PRESIDENT..... Ronald W. Harlan, Monsanto Oil Co.
 SECRETARY..... David A. Fontaine, Consultant
 TREASURER..... Kenneth L. Russell, Tenneco Oil Co.

LAFAYETTE GEOLOGICAL SOCIETY, P.O. Box 51896, Lafayette, Louisiana 70501

PRESIDENT..... John S. Rives, II, Conoco, Inc.
 1ST VICE-PRESIDENT..... Mike McWilliams, Sandefer Oil & Gas
 2ND VICE-PRESIDENT..... Aileen Duc, Arco Oil & Gas
 SECRETARY..... Charlotte Maddox, Arco Oil & Gas
 TREASURER..... Jack Schanck, Union Oil Company

MISSISSIPPI GEOLOGICAL SOCIETY, P.O. Box 422, Jackson, Mississippi 39205

PRESIDENT..... C. Kipp Ferns, ANR Production Company
 1ST VICE-PRESIDENT..... Ronald M. Tisdale, Union Oil of California
 2ND VICE-PRESIDENT..... Dora M. Devery, Placid Oil Company
 SECRETARY..... Steven S. Walkinshaw, Hughes Eastern Petroleum, LTD
 TREASURER..... J.R. "Bob" White, Mississippi Mineral Exploration
 PAST PRESIDENT..... Charles H. Williams, Mid-Continent Oil & Gas Association

NEW ORLEANS GEOLOGICAL SOCIETY, P.O. Box 52172, New Orleans, Louisiana 70152
PRESIDENT..... William W. Craig, University of New Orleans
VICE-PRESIDENT..... Richard A. Edmund, Amoco Production Co.
SECRETARY..... Kathleen S. Wiltenmuth, Chevron U.S.A. Inc.
TREASURER..... Robert H. Ketteringham, Exxon
PRESIDENT-ELECT..... Robert W. Sabate, Koch Exploration Co.

SHREVEPORT GEOLOGICAL SOCIETY, P.O. Box 750, Shreveport, Louisiana 71162
PRESIDENT..... W. David Hart, Caruthers Producing Co.
1ST VICE-PRESIDENT..... Robert E. Osborne II, Palmer Petroleum Inc.
2ND VICE-PRESIDENT..... James L. Brown, Independent
SECRETARY..... Bill Meaney, Mobley Oil Co. Inc.
TREASURER..... Tom Dickerson, Franks Petroleum Inc.

SOUTHEASTERN GEOLOGICAL SOCIETY, P.O. Box 1634, Tallahassee, Florida 32302
PRESIDENT..... Walter Schmidt, Florida Geological Survey
VICE-PRESIDENT..... Barry Beck, Florida Sink Hole Research Institute
SECRETARY/TREASURER..... Jacqueline M. Lloyd, Florida Geological Survey

SOUTH TEXAS GEOLOGICAL SOCIETY, B-100, Petroleum Center, San Antonio, Texas 78209
PRESIDENT..... Raymond T. Jones, Bright & Co.
VICE-PRESIDENT..... Lee T. Billingsley, Independent
SECRETARY..... John M. Long, Placid Oil Co.
TREASURER..... Robert L. Critchlow, Sante Fe Minerals

REPORT OF THE PRESIDENT GULF COAST ASSOCIATION OF GEOLOGICAL SOCIETIES



John T. Palmer

Welcome to Shreveport, Louisiana, and the 34th Annual Meeting of the Gulf Coast Association of Geological Societies. The Shreveport Geological Society is very proud to host this convention, with the cooperation of the East Texas Geological Society. We hope that all of you will be stimulated by the papers presented and will have fun at the social events.

It has been an honor to serve as President for 1984. My job has been made easy by the talented people who have served on the various committees, and the success of this convention is to be credited to their efforts. I particularly would like to acknowledge the chairman James Forgotson, Jr., and the Vice Chairman Ron Gieger, as well as all the committee chairmen and committee members for the excellent job they have all done.

The GCAGS continues to be in excellent financial shape under the watchful eye of the Finance Committee, headed by Clyde Harrison. The Student Aid Committee, chaired by Ed Roy, has been active this year supporting students throughout the Gulf

Coast. Bob Boyer has done an excellent job in riding herd on all the GCAGS publications. Lee Meltzer heads our Awards and Honors Committee and Dave Pope is the new GCAGS Historian. I also want to thank the Executive Committee, made up of the Presidents of the member societies, as well as the GCAGS Officers, Dr. E.G. Wermund, Vice-President; Charles S. Cook, Secretary; and Erwin W. Saye, Treasurer, for their support. A special note of thanks for their advise goes to Sarah Childress, Past President, and John Marble, last year's General Chairman.

We all hope that this year's convention will prove to be enjoyable, both intellectually and socially.

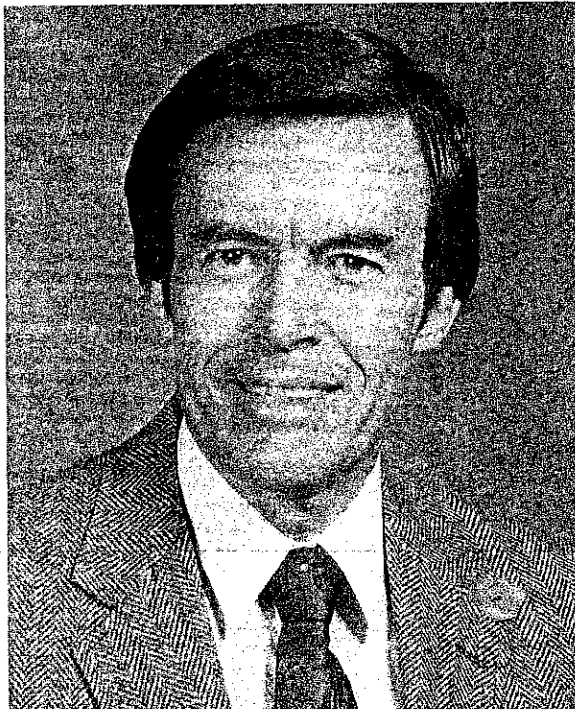
John T. Palmer
President
Gulf Coast Association of Geological Societies

GULF COAST ASSOCIATION OF GEOLOGICAL SOCIETIES

VICE PRESIDENT
Dr. E.G. Wermund



SECRETARY
Charles S. Cook



TREASURER
Erwin W. Saye



REPORT OF THE GENERAL CHAIRMAN THIRTY-FOURTH ANNUAL MEETING 1984



James M. Forgotson, Jr.

It is my pleasure to welcome you to the 1984 GCAGS-GCS/SEPM Convention on behalf of the City of Shreveport and the Shreveport Geological Society. We are fortunate in having a Civic Center Complex that provides excellent facilities for the convention's technical presentations, exhibits, and social functions. The primary purpose of the GCAGS-SEPM annual meeting is to disseminate new information and ideas applicable to the geology of the Gulf Coast Region and each convention committee has directed its efforts toward that goal.

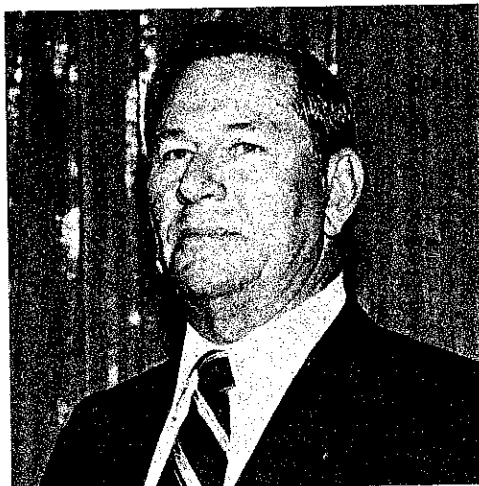
The excellent cooperation of the officers and committee members of the GCAGS, GCS/SEPM and each of the participating societies, which has been essential in our preparation for this meeting, is sincerely appreciated. The various convention committees have worked hard to make your visit to Shreveport enjoyable and to provide a technical program

that will improve your effectiveness as a geologist and explorationist. Each of us is indebted to the committee chairmen and committee members who unselfishly devoted their time and effort to performing the many tasks required to organize and conduct this convention. I want to thank John Palmer, our GCAGS President, for offering me the opportunity to serve with such a fine group of dedicated people.

On behalf of the GCAGS and each of the 1984 registrants, I want to thank the companies and individuals that contributed money and services to partially underwrite the cost of this meeting. Their generous support has enabled us to offer the quality of athletic competitions, social functions, entertainment, and publications of which we can all be proud.

James M. Forgotson, Jr.
General Chairman

REPORT OF THE EDITOR THIRTY-FOURTH ANNUAL MEETING—1984



B. Ross White

For many years the G.C.A.G.S. Transactions has been and will continue to be a major source of geological information about the Gulf Coast. It is used extensively by both the professional and student geologists. The 1984 version is no exception, covering a vast area of the Gulf Coast from offshore Florida to South Texas.

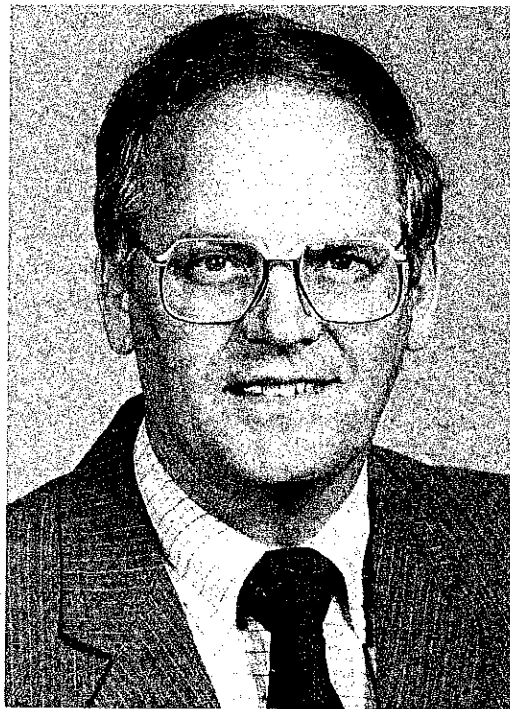
A publication of this magnitude requires the efforts of many individuals working together in complete harmony. First and foremost, I must recognize Dr. Nolan Shaw, Program Chairman, for soliciting and gathering together this fine group of papers. My Editorial Committee worked many long hours completing what sometimes seemed to be an endless task, and I wish to thank each and every one of them for their cooperation, and able assistance. They are: Charles S. Cook, Shreveport Exploration Co.; Ronald M. Gieger, Ronex Corporation; W.E. "Bill" Hayes, Naylor-Hayes; Dr. Leo A. Herrmann, Louisiana Tech University; Val J. Quinn, Independent Log Consultant; John H. Skinner, Skinner Exploration; Rick Turner, Pruet Oil; Henry J. Tyler, Independent Geologist; Percy J. Wheeler, Wheeler Exploration.

I would be amiss if I did not show my gratitude to Dr. James Forgotson, Jr. and Mr. John T. Palmer for their guidance and leadership in putting this volume together and helping to make it as informative and useful as possible.

Last but certainly not least I wish to thank the authors for their efforts in writing these papers, and for their patience and cooperation in meeting all the deadlines. In many cases they took time out from their busy schedules to discuss editorial changes, and in a few cases actually rewrote some portions of their manuscripts. I wish to thank all of them for their professionalism which made my job a lot easier.

B. Ross White
1984 Transactions Editor

REPORT OF THE PROGRAM CHAIRMAN THIRTY-FOURTH ANNUAL MEETING — 1984



Nolan G. Shaw

One always has a certain amount of apprehension when volunteering to take on a responsible position when conditions may exist which lie beyond your control. My main anxiety was on the number of geologists out there with manuscripts available for presentation at the GCAGS and GCS-SEPM meeting. My apprehension proved groundless as the response to our "call for papers" was immediate and abstracts were submitted which represented significant contributions to geology. Authors submitted many more abstracts for review than was possible to schedule for the program. They are to be commended for their participation, talent as demonstrated by the quality of their papers, and enthusiasm for their field.

Members of the Program Committee served in various ways by their ideas and ready assumption of tasks as they developed. Members included Kevin Byram, Tal Walker, Dr. Bob Frey, and Jane Shaw.

Finally, I am indebted to Dr. James Forgotson, Jr. and John Palmer for their guidance and direction in helping to make this program informative and interesting.

Nolan G. Shaw
Program Chairman

GULF COAST ASSOCIATION OF GEOLOGICAL SOCIETIES

STANDING COMMITTEES

AWARDS AND NOMINATIONS

Lee H. Meltzer, Chairman Independent
Sarah C. Childress Williams Exploration
John J. Amoruso Amoruso Petroleum Co.
Paul M. Strunk American Shoreline Inc.
Frank W. Harrison, Jr. Optimistic Oil Co.

FINANCE

Clyde E. Harrison, Chairman Odonohoe & Harrison Exp. Co.
Harry E. Mathey Mathey Petroleum Inc.
William R. Payne Independent

FINANCIAL-AID-TO-STUDENTS

Edward C. Roy, Jr., Chairman Trinity University
John E. McCarty Conoco, Inc.
Raymond W. Stephens Consulting Geologist

PUBLICATIONS

Robert E. Boyer University of Texas

ADVISORY

Paul M. Strunk American Shoreline Inc.

HISTORICAL

Dave Pope Louisiana Geological Survey

ORGANIZATION

1984 CONVENTION COMMITTEES

THIRTY-FOURTH ANNUAL MEETING

Dr. James M. Forgotson, Jr., 1200 Slattery Building, Shreveport, La. 71101
General Chairman

Ronald M. Gieger, Ronex Corporation — Vice Chairman

ADVERTISING

James C. Black, Arkla Exploration Co., Chairman
Arthur G. Murphy, Arkla Exploration Co.
Norrine Baggett, Arkla Exploration Co.

ARRANGEMENTS

Cliff C. Burgess, Arkla Exploration Co., Chairman
Jenny M. Yonker, Arkla Exploration Co.

ATHLETIC EVENTS

Ferrell L. Burgess, Chairman, Pennzoil Prod. Co.

GOLF

Alan H. Talley, Independent
Kenneth R. Jenkins, Delta Core Analysts Inc.
George R. Morgan, Independent
Val J. Quinn, Log Analyst
Steve Smith, Pennzoil Producing Co.

TENNIS

Dorothy Byrd
L.L. Sutton, Superior Supply Co.

RUN

Robert F. Cashen, First National Bank

AWARDS

Robert E. Osborne II, Palmer Petroleum, Inc.

EAST TEXAS GEOLOGICAL SOCIETY REPRESENTATIVE

Christopher H. Reed, Reed & Strawn Exploration

EDITORIAL

B. Ross White, Independent, Chairman
Charles S. Cook, Shreveport Exploration
Ronald M. Gieger, Ronex Corporation
W.E. "Bill" Hayes, Naylor-Hayes
Dr. Leo A. Herrmann, Louisiana Tech University
Val J. Quinn, Log Analyst
John H. Skinner, Skinner Exploration
James R. "Rick" Turner, Pruet Oil
Henry J. Tyler, Independent
Percy J. Wheeler, Wheeler Exploration

ENTERTAINMENT

Jim B. Harris, Midroc Operating Co., Chairman
A. Phil Foster, Jr., Independent
L. Lee Kincaide, Consultant
Keith Wagner, Reynolds Drilling Co., Inc.

EXHIBITS

Robert L. Williamson, Williamson Oil & Gas Inc.,
Chairman
Gregory C. Way, Samedan Oil Corp.

FIELD TRIPS

Arthur H. Trowbridge, Independent, Chairman
C. Ray Scurlock, Independent
James C. Hollingsworth, Consultant
Robert H. Langton, Independent
Gary D. Boland, Arkla Exploration Co.
Thomas L. Ham, Core Laboratories Inc.
Louis V. Hull, L.V. Hull Exploration Inc.
W. David Hart, Caruthers Producing Co.
Anthony J. Spano, W.J. O'Brien Interests
Brian E. Lock, U.S.L. Dept. of Geology
Charles G. Stone, Ark. Geol. Comm., Little Rock, Ark.
Boyd R. Haley, U.S.G.S., Little Rock, Ark.
David R. Williamson, Central Louisiana Electric Co.

HOUSING

Robert E. Daigle, McConathy Oil & Gas Co., Chairman
Wayne L. Simpson, WL5 Corp.
Dale R. Olsan, Nemours Energy Co.
Gregory L. Rembert, Projects, Inc.

LADIES ACTIVITIES

Marilyn Palmer, Chairperson
Pat Jordan, Chairperson
Sandra Williamson, Chairperson
Mary Jo Shelton, Registration
Marian Taggart, Registration
Darene Cook, Registration
Mary Ann Simpson, Hospitality
Ethel White, Hospitality
Teresa Roberts, Hospitality
Ann Kidda, Ice Breaker Cocktail Party
Holly Hanson, Ice Breaker Cocktail Party
Christy Robicheaux, Ice Breaker Cocktail Party
Blackie Alagood, Ladies Luncheon
Margaret Moffatt, Ladies Luncheon
Marsha Moffatt, Ladies Luncheon
Lucy Raster, Ladies Luncheon
Carlene Alagood, Ladies Luncheon
Pete Hollingsworth, Trip To Museum
Joyce Trowbridge, Trip To Museum
Jane Shaw, Norm Crosby Dinner & Dance Night
Sandra Shaw, Norm Crosby Dinner & Dance Night
Lee Lunsford, Norm Crosby Dinner & Dance Night
Dorothy Byrd, Tennis
Shirley Frazier, Favors
Jody Roberts, Favors
Betty Luce, Printing
Evelyn Vague, Friday Luncheon
Martha Talbat, Friday Luncheon
Barbara Osborne, Friday Luncheon

PRINTING

Nolan G. Shaw, Jr., Shreveport Exploration, Chairman
Eric Levy, Schlumberger Well Services

PROGRAM CHAIRMAN

Nolan G. Shaw, Centenary College, Chairman
Kevin M. Byram, Texas Oil & Gas Corp.
Tal W. Walker, Jr., Palmer Petroleum Inc.
Dr. Robert C. Frey, Centenary College
Jane C. Shaw, Shaw Petroleum

PUBLICITY

Henry J. Tyler, Independent, Chairman
Keaton McCarty, Independent

REGISTRATION

Craig C. Barclay, Caddo Management Inc., Chairman
Jack Carter, Delta Drilling
Mike Kidda, Moseley Petroleum Corp.
Mike Umphress, McGoldrick Oil Co.

SPEAKERS ASSISTANCE

Stuart L. Oden, Goodrich Oil Co., Chairman
Stephen C. Cowgill, Jarred & Associates
Mary Virginia Pommier, McConathy Oil & Gas Co.

TOBIN THEATRE

B.F. Anderson, Marshall Exploration

TRANSPORTATION

Donald P. Duncan, Jr., Zeddeck Energy, Chairman
Jeffrey C. Bonifas, Dresser Atlas

REPORT OF THE GCAGS FINANCIAL-AID-TO-STUDENTS COMMITTEE — 1984

Forty-four proposals for financial aid were submitted by the deadline from 16 academic institutions. Of these, 21 were funded for a total of \$14,953.83.

The following graduate students were awarded financial aid.

Philip J. Barnes	University of New Orleans, Lakefront
David J. Davies	Texas A & M University
Charles C. Evans	University of Miami
Kathleen M. Farrell	Louisiana State University
Michael S. Fenster	The University of Mississippi
Bruce H. Ford	University of New Orleans, Lakefront
Peter George	Texas A & M University
Douglas B. Groh	The University of Texas at Austin
John O. Hastings, Jr.	Texas A & M University
Kent Hathaway	Florida Institute of Technology
David R. Higginbotham	University of Alabama
Lance D. LeBourgeois	The University of Southwestern Louisiana
John T. Leethem	Texas A & M University
Douglas Levin	Louisiana State University
Jeffrey Lobao	Louisiana State University
Daniel J. Miller	Texas A & M University
William P. Ryan	University of New Orleans, Lakefront
John W. Snedden	Louisiana State University
Charles T. Swann	The University of Mississippi
Michael Trojan	Texas A & M University
R. Lee Vaughan	The University of Alabama

The Gulf Coast Association of Geological Societies wish to take this opportunity to congratulate these students and wish them success in their research.

**GULF COAST ASSOCIATION OF GEOLOGICAL SOCIETIES
BEST PAPER AWARDS
THIRTY-THIRD ANNUAL MEETING
JACKSON, MISSISSIPPI**



John Cagle



M. Ali Khan



Wayne M. Ahr



Harris Benjamin Hull, Jr.

FIRST PLACE AND THE A.I. Levorsen Memorial Award were awarded to John Cagle and M. Ali Khan for their paper entitled "Smackover — Norphlet stratigraphy, south Wiggins Arch, Mississippi and Alabama."

John Cagle is Manager of Geology for Conoco in Houston. He received a BS degree in Geology from Cal Tech in 1952 and joined Conoco that same year. He has held a progression of positions with Conoco including Supervising Geologist, Division Geologist, Assistant to the Vice President, and Division Manager. For the past 27 years, Mr. Cagle has lived and worked on the Gulf Coast in Shreveport, Corpus Christi and Lafayette in addition to three separate stays in Houston.

M. Ali Khan is presently employed with Conoco Inc. in Lafayette as Project Supervisor for exploration in Mississippi, Alabama and Florida. A native of Pakistan, he received his B.S. and M.S. degrees in Geological Engineering from M.E.T. University, Ankara, Turkey in 1969 and 1972.

From 1976 to 1979 he was an Exploration Geologist with Pennzoil Exploration and Production Company in Houston. Prior to that, he worked as Principal Petroleum Engineer with the Government of Pakistan in the overall planning of petroleum exploration and production strategy.

During 1972-1976, he was with Wintershall A.G., Germany, exploring Eocene trends offshore Pakistan and Jurassic gas exploration in northern Germany.

In 1969-1970, he worked with the Turkish government as a Geological Engineer.

He is a member of the A.A.P.G., S.P.E. and H.G.S.

SECOND PLACE was awarded to Wayne M. Ahr and Harris Benjamin Hull, Jr. for their paper entitled "Burial diagenesis and reservoir development in the North Haynesville (Smackover) field, Louisiana."

Wayne Ahr was born in San Antonio, Texas, in 1938 and was reared in nearby La Coste, where he finished high school in 1956. He received his B.S. in Geology at U.T. El Paso (1960), his M.S. in Oceanography at Texas A&M (1965) and his Ph.D. in Geology at Rice (1967). His M.S. research on Pleistocene carbonates on the Yucatan Platform was supervised by Brian Logan and his Ph.D. on Cambrian algal reefs in Texas was done with Professor James Lee Wilson.

Ahr worked at Shell Development Company's Houston Laboratory from 1963 to 1965 and in the Shell Oil Company Houston Division Exploration Office from 1967 to 1970. He moved to Texas A&M in 1970 and is now Professor of Geology there. Ahr is a member of A.A.P.G., S.E.P.M. and Sigma Xi.

For the past five years, Ahr's research has focused on burial diagenesis and tectonic controls on carbonate sedimentation. His work has been mainly on the Gulf Coast Jurassic and on the Mississippian of Texas and New Mexico. Ahr has approximately forty publications on carbonates and has done consulting work as well as short courses and field trips for industry.

During January to August, 1984, Ahr studied Dinantian (Mississippian) 'reefs' in Ireland, Belgium and England as part of a sabbatical research project at the University of Leicester.

Harris Benjamin Hull, Jr. received a B.S. degree in Geology from Washington and Lee University in 1980, and an M.S. degree in Geology from Texas A&M University in 1982. He



Thomas E. Ewing



Clyde H. Moore

at Washington and Lee University and Texas A&M University, Ben worked as a Geologist for Kerr-McGee Resources and for the U.S. Geological Survey in the Coastal Plain in North Carolina and Virginia. After graduation from Texas A&M, he has been studying carbonate sedimentology and geochemistry, with Geochem and most recently with the Petrographic Division of Core Laboratories in Houston, Texas. Ben's research interests involve Jurassic sedimentation and diagenesis in Northern Louisiana and Southern Mississippi. He is a member of the American Association of Petroleum Geologists, and the Houston Geological Society.

THIRD PLACE (Tie) was awarded to Thomas E. Ewing for his paper entitled "Growth faults and salt tectonics in the Houston diapir province — relative timing and exploration significance" and to Clyde H. Moore for his paper entitled "Regional patterns of diagenesis, porosity, evolution and

hydrocarbon production, upper Smackover of the Gulf rim."

Thomas E. "Tom" Ewing is a Research Associate with the Texas Bureau of Economic Geology at Austin. He received a B.A. in Geology from Colorado College in 1975, a M.S. in Geochemistry from New Mexico Tech in 1977, and a Ph.D. in Geological Sciences at the University of British Columbia in 1981. His dissertation work included a major synthesis of early Tertiary volcanism, basin development and deformation in the Pacific Northwest.

Since 1980, Dr. Ewing has been at the Bureau of Economic Geology. He has been active in a variety of research programs, including geopressured geothermal energy in the Gulf Coast Basin, Cretaceous volcanism in South Texas, West Texas and New Mexico structure and Hackberry deep-water depositional systems. He is a co-author of the *Atlas of Major Texas Oil Reservoirs*. Most recently he has served as the compiler of the Tectonic Map of Texas, with direct responsibility for the Gulf Coast, Mexico, and the Permian Basin. He has spoken extensively at local, regional and national geological meetings, receiving the A.I. Levorsen Memorial Award in 1982.

Tom Ewing is a member of various regional and national professional societies including the AAPG, the GSA and the AGU, as well as the Austin, South Texas and New Mexico local geological societies. He has served as secretary of the Austin Geological Society and as its delegate to the AAPG House of Delegates.

Clyde H. Moore attended Louisiana State University where he received his B.S. degree in 1955. He received his M.S. and Ph.D. degrees from the University of Texas at Austin in 1959 and 1961. Dr. Moore was a research geologist with Shell Development Company from 1961 to 1966 working in Central Texas, the Atlantic Coast and the Pacific Coast basins. Since joining the faculty at L.S.U. in 1966, he has been actively engaged in carbonate research in Holocene as well as ancient sequences across the northern Gulf and Caribbean. He has published extensively in Mesozoic stratigraphy, carbonate petrology and carbonate sedimentology. At present Dr. Moore is Director of the L.S.U. Department of Geology Applied Carbonate Research Program.

CONSTITUTION AND BYLAWS GULF COAST ASSOCIATION OF GEOLOGICAL SOCIETIES

CONSTITUTION

ARTICLE I—Name

This is a non-profit organization and shall be known as the "Gulf Coast Association of Geological Societies." It is hereinafter referred to as "This Association."

ARTICLE II—Object

The object of This Association is to provide for discussion and publication of papers on subjects and problems coming within the scope of the Geological profession and with particular emphasis on Gulf Coast geology.

ARTICLE III—Organization

This Association is an organization of AAPG-affiliated Geological Societies in the Gulf Coast Area.

Section 1.

The business of This Association shall be transacted by an Executive Committee composed of one representative from each member society and the President, Vice-President, Secretary, Treasurer, and Past President. The Secretary and Treasurer shall be non-voting members of the Executive Committee. The Vice-President, Secretary, and Treasurer shall be elected by the Executive Committee at the annual meeting. The Secretary and Treasurer shall be nominated by the Executive Committee of the local Geological Society next in line to host the annual meeting. The Vice-President shall be nominated by the Executive Committee of the host society for the annual meeting two years hence and shall accede to the Presidency. Thus each year the President, Secretary and Treasurer will be from the host society with the Vice-President providing continuity with the Executive Committee as he assumes the Presidency in the ensuing year. The duties of these officers shall be those customary to their respective offices.

The GCAGS representative to the Advisory Council of American Association of Petroleum Geologists shall be selected by the Executive Committee of GCAGS and shall be an ex officio, non-voting member of the GCAGS Executive Committee.

Each member society shall designate a representative to the Executive Committee and in the event the chosen representative cannot attend any given Executive Committee meeting, an alternate representative shall be appointed by the member society to attend and vote in the absence of the representative. The representative, when practicable, shall be an officer or past officer of the society he represents.

Each society shall have one vote on actions taken by the Executive Committee with the exception that the host society, the next annual host society and the immediate past host society will be entitled to two votes by virtue of their members holding the offices of President, Vice-President and Past President.

The officers of the Executive Committee shall be elected for a term of one year. They shall be elected and assume their duties as soon after the annual meeting of This Association as is practicable. Any vacancies shall be filled by the Executive Committee as provided above in Paragraph 1.

Section 2.

The business of This Association shall be conducted by the Executive Committee. A simple majority vote of the members present at meetings is required to effect decisions, except in those matters which require a greater majority, as set forth in the Constitution and Bylaws.

A quorum shall consist of more than one-half of the voting members of the Executive Committee.

ARTICLE IV—Meetings

There shall be an annual meeting of This Association, the time and place of which shall be determined by the Executive Committee.

ARTICLE V—Publications

There shall be an annual *Transactions* published by This Association, which shall contain papers presented at the annual meeting and such other material as selected by the Executive Committee. The Executive Committee is authorized to have published additional bulletins, and other material which they feel will further the object of This Association.

ARTICLE VI—Funds

The funds of This Association shall be deposited in any national bank or Federally insured Savings and Loan Association selected by the Finance Committee, to the credit of This Association, or invested in U.S. Government Bonds at the discretion of the Finance Committee.

ARTICLE VII—Amendments

Amendments to this Constitution may be proposed by the Executive Committee, or by any two member societies. Proposed amendment shall be submitted to each of the member societies in writing. It shall require an affirmative vote of three-fourths of the member societies to ratify an amendment to this Constitution.

ARTICLE VIII—Later Affiliation

Non-member Geological Societies in the Gulf Coast Area which are affiliated with AAPG may petition the Executive Committee for membership and shall be accepted by an affirmative vote of three-fourths of the Executive Committee.

AMENDMENT I

Any member society may resign from This Association at any time by written notice to the Executive Committee. There shall be no obligation to transfer to such resigning society any portion of This Association's funds.

AMENDMENT II

This Association shall terminate at such time as a majority of the member societies shall so vote. Upon dissolution all funds and other property shall be divided equally among the member societies.

BYLAWS

I. COMMITTEES:

The President, with the approval of the Executive Committee, shall appoint the Annual Meeting Chairman, and the following permanent committees:

- A. Publications
- B. Advertising
- C. Publicity

Appointment to these committees shall be for a term of one year.

1. Annual Meeting Chairman

The Annual Meeting Chairman shall direct the staging of the annual meeting, and shall have the authority to appoint such additional committees as he deems necessary.

2. Publications

The Publications Committee shall be responsible for obtaining papers for presentation at the annual meeting, and editing and publishing the annual *Transactions*. It shall endeavor to stimulate geologists in the Gulf Coast to prepare papers which can be collected and published in the *Transactions*, symposium or other form in order to further the object of This Association as set forth in Article II of the Constitution. This committee shall be composed of one member from each of the affiliated societies.

3. Advertising

The Advertising Committee shall be responsible for obtaining advertisements in the publications of This Association, as directed by the Executive Committee. This committee shall be composed of one member from each of the member societies.

4. Publicity

The Publicity Committee shall be responsible for obtaining maximum national and local publicity of the activities of This Association. Also it shall be the responsibility of this committee to stimulate interest and participation in association affairs. The Executive Committee shall function as the Publicity Committee.

The President, with the approval of the Executive Committee, may appoint such additional committees as are necessary to conduct the business of This Association.

II. TREASURER

The Treasurer shall have the authority to issue checks against the Annual Meeting bank account of This Association on his

sole signature, but in the event of his absence or incapacity to act, withdrawals or payments by checks may be made on the signature of the President during the continuance of the absence, or incapacity, of the Treasurer. In this event, the identity and authority of the President, and the circumstances relating to the absence or incapacity of the Treasurer shall be certified by the Executive Committee, if so required by the depository. The Treasurer shall submit a financial report on the Annual Meeting at each meeting of the Executive Committee and shall keep a set of books in accordance with good accounting practices. He shall submit the books of the Annual Meeting to the Finance Committee by March 1st following the Annual Meeting. The office of Treasurer shall be bonded as directed by the Executive Committee.

III. FINANCE COMMITTEE

The Finance Committee shall be responsible for investing and managing the funds of the Association. They shall be responsible for advancing to the Treasurer the necessary funds for operating the Annual Meeting and shall disburse funds for expenses and projects not related to the Annual Meeting as directed by the President upon approval by the Executive Committee. The Committee shall have authority to invest the funds as outlined in Article VI. They shall prepare a financial report on the Association's funds and submit it at each meeting of the Executive Committee. They shall also keep an inventory and storage record of publications and equipment owned by the Association. They will keep a set of books in accordance with good accounting practices and will submit the books for auditing as requested by the Executive Committee. The Committee will oversee the preparation and submittal of the Association's Annual Income Tax Return. The Committee will also keep a file of these financial reports, as well as the report of the Treasurer for each Annual Meeting, for access by officers and representatives of the annual meetings of future years. The Committee shall consist of three members serving staggered three-year terms, such that each year one member will complete his term and a new member will be appointed in his place. The President of the Association, with the approval of the Executive Committee, shall appoint the members of the Finance Committee and they shall elect their own Chairman. Members of the Finance Committee shall be bonded as directed by the Executive Committee.

IV. These Bylaws may be amended by an affirmative vote of three-fourths of the Executive Committee.

V. There shall be no dues.

GULF COAST ASSOCIATION OF GEOLOGICAL SOCIETIES PAST OFFICERS AND CONVENTION CHAIRMEN

YEAR	HOST CITY	PRESIDENT	VICE-PRESIDENT	SECRETARY	TREASURER	CONVENTION CHAIRMAN
1951	New Orleans	L. Bowling	W. A. Gorman	J. S. Spencer	E. M. Baysinger	W. J. Nugent
1952	Corpus Christi	W. M. Chaddick	D. D. Utterback	W. A. Peterson	T. D. Barber	
1953	Shreveport	R. T. Wade	W. H. Knight	F. H. Webster	E. W. Kimball	R. D. Sprague
1954	Houston	W. R. Canada	L. L. Traupe	C. W. Holcomb	C. C. Barber	G. J. Joyce
1955	Biloxi	A. E. Blanton	M. W. Beckman	R. A. Davis	A. F. Scott	T. H. Philpott
1956	San Antonio	R. L. Layden	P. Montgomery	E. T. Musselman	K. C. Anderson	R. C. Wilshusen
1957	New Orleans	H. N. Hickey	R. W. Grayson	J. F. Moss	W. H. Wallace, Jr.	O. G. Bell
1958	Corpus Christi	E. A. Lohse	L. Harvey	W. W. Woolfolk	J. A. Wheller	A. E. Blanton
1959	Houston	G. C. Hardin, Jr.	D. N. Osburn	A. W. Wood	E. G. Jeffreys	L. L. Palmer
1960	Biloxi	M. F. Kirby	E. P. Roth	H. O. Woodbury	E. L. Ames	L. H. Meltzer
1961	San Antonio	D. Dasso	J. C. Byrd	W. E. Bancroft	K. Soule	H. J. Tyler
1962	New Orleans	T. H. Philpott	E. Knott	R. W. Luker	R. E. Rogers	B. F. Dryer
1963	Shreveport	J. C. Byrd	R. E. Fairchild	K. C. Harkins, Jr.	D. A. Pedrotti	E. A. Lohse
1964	Corpus Christi	K. Knott	A. M. Borland	W. A. Robbins, Jr.	J. L. George, Jr.	R. R. Copeland
1965	Houston	R. E. Fairchild	J. H. Hensley	M. L. Frazier, Sr.	J. S. Schoelen	M. O. Turner
1966	Lafayette	A. M. Borland	M. D. Horton	L. G. Hughes	L. C. Bryant	L. E. Warren
1967	San Antonio	W. L. Stapp	R. O. Vernon	J. W. Yon, Jr.	E. D. Minihan	H. S. Puri
1968	Jackson	M. D. Horton	H. J. Tyler	C. E. Brown	C. W. Hendry, Jr.	J. O. Goffe
1969	Miami	R. O. Vernon	L. H. Meltzer	M. L. Dwight	B. C. Tucker	R. G. Williamson
1970	Shreveport	H. J. Tyler	D. R. Boyd	M. H. Oakes	P. G. Gray	J. M. Sides
1971	New Orleans	L. H. Meltzer	F. M. Schall, Jr.	M. E. Hole, Jr.	J. E. Melton	C. E. Harrison
1972	Corpus Christi	D. R. Boyd	S. J. Lysinger	T. J. Eby, Jr.	P. W. Cawthon, Jr.	F. W. Harrison, Jr.
1973	Houston	F. M. Schall, Jr.	W. H. Moore	W. E. Taylor	J. J. Bellamy	C. H. Williams, Jr.
1974	Lafayette	S. J. Lysinger	C. L. Sartor	J. T. Palmer	H. L. Ladner	L. E. Jordan
1975	Jackson	W. H. Moore	R. E. Boyer	A. E. Bell	C. E. Brown	E. G. Wermund, Jr.
1976	Shreveport	C. L. Sartor	P. G. Gray	R. M. Swords	F. L. Osborne, Jr.	Jules Braunstein
1977	Austin	R. E. Boyer	E. C. Roy, Jr.	S. L. Perkins	C. J. Corona	George His
1978	New Orleans	R. W. Stephens	F. W. Harrison, Jr.	J. W. Shirley	R. A. Anderson	M. A. Munchrath
1979	San Antonio	E. C. Roy, Jr.	P. M. Strunk	T. J. Wintermute	W. R. Payne	Wilson Humphrey
1980	Lafayette	F. W. Harrison, Jr.	J. J. Amoroso	C. G. Beckwith	C. A. Baird	J. O. Lewis
1981	Corpus Christi	P. M. Strunk	S. C. Childress	S. A. Horton	P. D. Cate	J. C. Marble
1982	Houston	J. J. Amoroso	John T. Palmer	Charles S. Cook	Erwin W. Saye	James M. Forgotson, Jr.
1983	Jackson	S. C. Childress				
1984	Shreveport	John T. Palmer				

HONORARY MEMBERSHIP



William Rhodes Paine

Bill Paine has distinguished himself in service to the GCAGS as well as to the geological profession. Bill was born and reared in Minneapolis, attended Montana School of Mines, and earned B.S. and M.S. degrees in geological engineering. He did additional graduate work at Louisiana State University and joined the geological faculty at the University of Louisiana in 1954. Bill, who was an outstanding professor for over 25 years, unfortunately had a stroke in 1979 and has been incapacitated since that time.

His past accomplishments, however, in teaching, research, and participation in the GCAGS well qualify him for Honorary Membership in the Association. Bill's contributions to the GCAGS include: GCAGS Field Trip Chairman 1966 and 1974; GCAGS Convention Vice Chairman 1972; and winner of the Second Best Paper in 1967. The 1974 *Transactions* volume was dedicated to him with the following citation, "His interest in geology knows no bounds. He is as excited examining the sutures on a fossil as he is pondering environments at the outcrop. He is one of those rare creatures equally at home on the university campus, in the research lab, or in the hurly-burly world of industry." Bill is a past president of the Lafayette Geological Society and an Honorary Life Member. He received the Halliburton award for excellence in teaching from 1969-72. He, also, has added greatly to our knowledge of Gulf Coast geology through his publications. Bill has written prolifically about South Louisiana geology. His most significant publications deal with the Nonion Struma, Frio and Hackberry wedges. Perhaps his best known paper and publication is entitled "The Stratigraphy and Sedimentation of the Hackberry Shale and Associated Beds of Southwest Louisiana" published in the GCAGS in 1966. Bill's character, his dedication, both to Gulf Coast geology and his geological students, along with his service to the GCAGS, entitle him to Honorary Membership in the GCAGS.

Frank W. Harrison, Jr.

Rufus J. LeBlanc, Sr. went to Louisiana State University where he received a bachelors degree in 1939 and a masters degree in 1941, both in geology. Since that time he has devoted most of his professional career as a geologist to the study of clastic sedimentation and stratigraphy, mainly in the Holocene. Rufe worked for seven years with the Mississippi River Commission under the leadership of Dr. Harold Fisk and has been with Shell Oil Company since 1948.

His first assignment at Shell was to organize a research team to study Holocene clastic sediments. LeBlanc and his former L.S.U. classmate and friend, H.A. Bernard, and other co-workers at Shell developed many of the criteria for recognizing and understanding depositional environments of Holocene and ancient alluvial, deltaic, coastal barrier, transgressive and marine clastic sediments. In 1953, he was appointed manager of Shell Oil's Geological Research Department and a subsequent operations assignment gave Rufe the opportunity to directly apply his research knowledge in the search for hydrocarbon in the Gulf Coast Basin. Some 50 scientists were members of various research teams put together by Rufus during his tenure as research manager in the early 1950's. Most of these people worked on various aspects of Holocene and ancient clastics and carbonates sedimentation and stratigraphy. Today some of these people have responsible positions in Shell Oil Company and others hold professorships at Zurich, Texas A&M, Penn State, Michigan, Miami, Johns Hopkins, Berkeley, Stanford, Yale, Princeton, and other institutions. Since 1965 Rufus has taught courses on clastic sedimentation and stratigraphy at Shell's Bellaire Research Center.

Rufus has published over 40 technical papers, but is probably best known for his unique and inspiring lectures presented during the innumerable field trips he has led for various universities and geological societies to observe Holocene clastics sedimentary environments along the Texas Gulf Coast. He has received Honorary Membership in the Houston Geological Society, SEPM and AAPG. The *Transactions* of the 1982 GCAGS Convention were dedicated to Rufus in recognition of his outstanding contribution to the geological profession as a researcher, educator, manager and petroleum explorationist. His many activities have greatly benefited the profession and members of GCAGS. The devotion and understanding of his wonderful wife, Bede, has helped to make Rufus a great geologist and man. It is, therefore, befitting that Rufus J. LeBlanc, Sr. should receive the GCAGS Honorary Membership.

HONORARY MEMBERSHIP

Rufus J. LeBlanc, Sr.



Thomas A. Bay, Jr.

HONORARY MEMBERSHIP

Marion Orville Turner



M.O. Turner, an outstanding geologist and oil finder, is one of those rare persons with the ability and willingness to serve not only many professional organizations but also civic and political organizations in his community. His success in the field of petroleum geology can be attributed to his early experiences and training with Stanolind Oil & Gas Company and his association with outstanding independent geologists in subsequent years. It is largely due, also, to his personal integrity, hard work and dedication to his profession. His abilities not only include an oil finding expertise but an in-depth knowledge of the oil and gas business.

M.O. was born September 4, 1923 in Magnolia, Texas. His family later moved to Houston where he attended public school and one year of business college prior to enlisting in the U.S. Navy during WW II. After the war, M.O. returned to Houston to earn a B.S. degree in geology at the University of Houston in May 1948. In 1949 he married Margaret Ann Collins, also of Houston. They have two children, Mr. Kathleen Turner Willoughby and Timothy Jay Turner.

After 7 years with Stanolind in Houston, Corpus Christi and San Antonio, M.O. resigned in 1954 as Senior Division Staff Geologist to establish a consulting practice in San Antonio. He has since developed interests and production in several South Texas counties.

Turner has actively served in GCAGS, AAPG, and AIPG affairs for many years and has published numerous Position Papers on energy and mineral issues such as the Alaska Lands Act in 1980 and the Wilderness Protection Act of 1982. In 1982, as President of AIPG, M.O. advanced the position that exploration and development of energy and minerals in Wilderness Areas on Federal Lands were not necessarily in conflict with responsible conservation and preservation measures and on this subject presented testimony before the Senate Energy Committee. Turner directed all convention activities for AAPG from 1975 to 1978 as Chairman of the Convention Committee. He served as General Chairman of the 1967 Annual Meeting for the Gulf Coast Association of Geological Societies (GCAGS) and was also General Chairman of the AAPG 197

1977 Science and Engineering Fair Award Committee and as GCAGS Representative on the AAPG Advisory Council, as Chairman of GCAGS Awards and Nominations Committee, and is an Honorary Member of AAPG.

M.O. has distinguished himself as a fine leader in his many endeavors both professionally and personally and he has earned the true friendship and respect of the many people he has worked with who have known him through the years. M.O. Turner is truly worthy of the Honorary Membership GCAGS is now bestowing on him.

Robert L. Begema

FOR DISTINGUISHED SERVICE

A.T. Green, Jr.

A.T. Green, Jr. was born in Joinerville, Texas where his father, Al Taylor Green, Sr. was a long-time employee of Sohio Petroleum Company. It is no exaggeration to say that A.T. practically grew up in the oil patch. Then, like many other sons of Texas, he was off to College Station and Texas A&M University where he obtained the academic portion of his geological education. He was graduated in 1955 and became a member of AAPG in that same year.

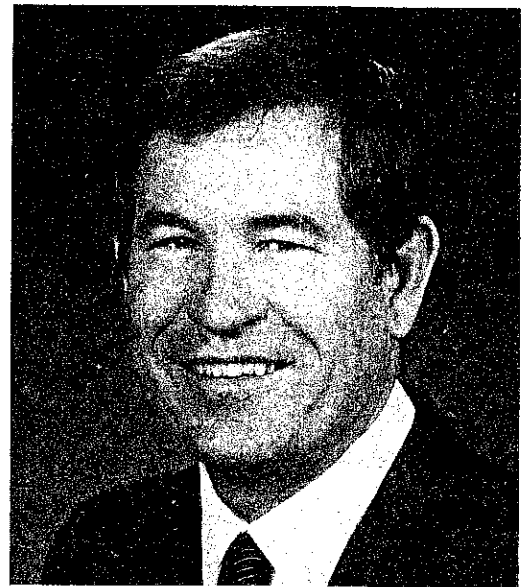
The following fifteen years were in company employment, first with Union Oil Company and later with Superior Oil Company in New Orleans. In 1970 he was attracted by the opportunities as a geological consultant and set out on his own. The story goes that the first prospect he worked up was offered to and rejected by no less than fifty different operators. Finally, his confidence and persistence were rewarded. He sold it. It was productive and he has been on the fast track ever since.

A.T. continued as a consultant until 1976 when he formed his own independent oil company, Green Exploration Company, through which he develops drillable prospects in South Louisiana. He has another company, SEAS (Scientific Ecological Essays Systems) that was formed to help the oil industry in problems with governmental agencies concerning permitting and conservation.

In the mid-sixties A.T. became active in professional organizations including the New Orleans Geological Society (Treasurer 1963-64); AAPG (District Representative 1966-68 and 1975-78 and Nominating Committee-House of Delegates and Continuing Education Committee 1974-76); GCAGS (Vice Chairman-Special Projects Committee 1968-72); IPAA (Director 1978-81); SIPES (Chapter Chairman 1976-78, National Convention Chairman 1981, National Director 1982-85, National Secretary 1983 and President 1984).

In the 1962 *Transactions* A.T. was one of the authors of "The Potential Down-Dip Limits of Production from the Oligocene and Miocene of Southeastern Louisiana." In the 1963 *Transactions* A.T. was chairman of the New Orleans Geological Society Study Groups "Stratigraphic Traps in Southeastern Louisiana." But it was as Vice Chairman of the Special Projects Committee during the period 1968-72 that he made his very substantial contributions to two undertakings of GCAGS. He took an active part in the early stages of planning and evaluation of the material that went into the "Bibliography of Gulf Coast Geology." He also, over a period of several years, worked at recruiting geologists who contributed their expertise to the "Tectonic Map of the Gulf Coast Region" and in organizing their efforts. His was one of the key contributions to the successful completion of that effort.

Harold W. Hickey



FOR DISTINGUISHED SERVICE

DeWitt C. Van Siclen



Because of his dedication to the geological profession and to the Gulf Coast Association of Geological Societies in particular, DeWitt C. Van Siclen has been selected for the GCAGS Distinguished Service Award.

DeWitt received the B.A. with Highest Honors from Princeton University in 1940, an M.S. the following year from the University of Illinois and the Ph.D. from Princeton in 1951, all in geology. His geological career began with surface mapping in the Appalachian region for Consolidated Natural Gas Company during the summers of 1939-41 and 1946. From 1942 until 1946 DeWitt served in the Air Force in the U.S. and the Mediterranean and European theaters. Drilling and Exploration Company employed him in Abilene from 1947 to 1950, when he was recalled to active duty and served in 1951-52, mostly in the Air Force Office of Scientific Research as its Executive Officer. In 1952 he became a research and special problems geologist with the old Pan American Production Company, a predecessor of the present Amoco Production Company. DeWitt left Amoco in 1959 to begin full-time teaching at the University of Houston, serving as Chairman of the Geology Department from 1960 to 1967. He took early retirement in 1982, but continues to teach one graduate course most semesters, related to petroleum exploration or to Gulf Coast regional geology and tectonics. The experiences and insights reflected in his teaching have benefited untold numbers of students.

DeWitt's official service to the geological profession began in 1959 as Editor of the 1959 GCAGS *Transactions*. Subsequently, he served as GCAGS Field Trip Chairman in 1965; HGS Region Chairman for the GCAGS Tectonic Map Committee 1967-68; and on the GCAGS Technical Program Committee in 1973. DeWitt has served the

Houston Geological Society in elected offices and on numerous committees from 1959 to present, which included starting the HGS Continuing Education program in 1963 or so and directing it during its first few years.

DeWitt has also contributed to the geological profession through his long list of publications, several of which have appeared in GCAGS *Transactions*. A paper by him in the 1958 AAPG Bulletin was one of the more significant contributions to the understanding of sedimentary processes, especially the influence of depositional topography associated with starved basins. In the Houston area DeWitt is a leading authority on active faulting and its potential effects upon construction, having pioneered the successful application to this problem of aerial photography, borehole geophysical logging and near-surface stratigraphy.

DeWitt has indeed had a varied career of distinguished service to the geological profession.

James O. Lewis

**GULF COAST SECTION
SOCIETY OF ECONOMIC PALEONTOLOGISTS
AND MINERALOGISTS
1983-1984 OFFICERS**

PRESIDENT Don G. Bebout
Bureau of Economic Geology
The University of Texas at Austin
University Station Box X, Austin, Texas 78713

PRESIDENT-ELECT Ernest A. Mancin
Geological Survey of Alabama
P.O. Drawer 0, University, Alabama 35486

VICE-PRESIDENT Michael J. Nault
Tenneco Oil Company
Box 39300, Lafayette, Louisiana 70503

SECRETARY Susan J. Conger Morris
Gulf Exploration and Production Company
P.O. Box 1635, Houston, Texas 77152

TREASURER Nelson B. Yoder
Integrated Exploration Services, Inc.
P.O. Box 1546, La Porte, Texas 77571

PAST PRESIDENT John L. Carney
Amoco Production Company
P.O. Box 50879, New Orleans, Louisiana 70150

1984 ANNUAL CONVENTION COMMITTEE

PROGRAM CHAIRMAN Nolan Shaw
910 Pierremont Road, Suite 116, Shreveport, Louisiana 71106

EDITOR Robert S. Kier
Camp Dresser & McKee Inc.
3445 Executive Center Drive, Suite 220, Austin, Texas 78731

REPRESENTATIVE Robert C. Frey
Department of Geology
Centenary College, P.O. Box 4188, Shreveport, Louisiana 71134

AWARDS CHAIRMAN Michael J. Nault
Tenneco Oil Company
Box 39300, Lafayette, Louisiana 70503

REPORT OF THE PRESIDENT GULF COAST SECTION SOCIETY OF ECONOMIC PALEONTOLOGISTS AND MINERALOGISTS 1984



Don Bebout

The success of the Annual Meeting of the GCAGS/SEPM depends upon the hard work and determination of the local members of both organizations. Representing the GCS/SEPM here in Shreveport were Nolan Shaw (Centenary College), who served as Program Chairman, and Robert Frey (Centenary College), who is the SEPM Representative. Robert Kier (Camp Dresser & McKee, Austin, Texas) was the GCS/SEPM Editor. I appreciate the efforts of these members.

The GCS/SEPM Annual Research Conference was an innovative idea created by Gene Martin in 1980 when he was President. The purpose of the conference was to bring together a limited number of individuals (300) interested in a particular topic appropriate to the Gulf Coast area. The format has consisted of oral presentations by invited speakers during the day and core and poster sessions at night. The response to these conferences has been overwhelming. The Fourth conference titled "Habitat of Oil and Gas in the Gulf Coast" was held in December 1983 in Houston and was chaired by Gene Martin and Bob Perkins; a publication of full-length papers is forthcoming. The volume containing papers from the Third conference (1982), "Jurassic of the Gulf Rim" (edited by Bill Ventress, Don Bebout, Bob Perkins, and Clyde Moore), is now available. The Fifth conference will be held next month in Austin, and all plans and preparations are complete. The agenda for the Fifth conference "Characteristics of Gulf Basin Deep-Water Sediments and Their Exploration Potential," has been developed by Jim Coleman and Arnold Bouma and their Program Advisory Committee. The focused direction of the conference format has been extremely popular and complements the more general broad-based approach of the GCAGS/SEPM Annual Meeting. The Research Conference will undoubtedly continue to be a major annual event of the GCS/SEPM.

The traditional spring field trip was not held this year. Instead, GCS/SEPM sponsored three field trips in conjunction with the AAPG/SEPM National Meeting in San Antonio. The three trips — (1) Jurassic and Early Cretaceous Carbonate Platform Margin, Northeast Mexico (James L. Wilson, William C. Ward, and Joseph M. Finneran; leaders), (2) Geology of

the Permian Shelf Margin-to-Basin Transition of the Western Escarpment, Guadalupe Mountains, Texas (Lloyd C. Pray and G. Allan Crawford; leaders), and (3) Lower Cretaceous Carbonate Strata in the Moffatt Mound Area, Near Lake Belton, Bell County, Texas (Thomas A. Bay, Jr.; leader) — were fully booked and, from all reports, were very well received. The guidebooks for the three trips were published by GCS/SEPM Foundation and are now available.

The GCS/SEPM Foundation has been functioning for more than 3 years and becomes increasingly more active under the able directorship of Bob Perkins. Tax-exempt contributions to the Foundation have aided the Section in putting on the Annual Research Conference and in publishing field-trip guidebooks and the Conference Proceedings. The efforts of the Trustees, Claude M. Quigley (Chairman), Doris M. Curtis, Edward B. Picou, Jr., and Jack Dunlap (Ex-Chairman), in soliciting funds for the Foundation are greatly appreciated. Gene Martin has been appointed as Chairman, Special Projects Committee, by the Trustees, with fund raising as his special task; you will doubtless be hearing from Gene.

This meeting marks the end of my term as the President of GCS/SEPM; it has been a rewarding and educational experience. Thanks are due to the membership for offering me this opportunity and to the other members of the Executive Council — Ernest Mancini, President-Elect; Michael Nault, Vice-President; Susan Conger Morris, Secretary; Nelson Yoder, Treasurer; and Chip Carney, Past President — for their support throughout the year.

There are now approximately 700 members in the GCS/SEPM. I know that among these 700 there are many of you who would like to participate and become active in the organization. However, it is difficult for the President to identify all those who feel they would like to help; so please step forward and present your name and interests to Ernie Mancini, your new President. The GCS/SEPM presents an excellent opportunity for you to gain experience in society affairs.

Don Bebout
President, GCS/SEPM

**GULF COAST SECTION
SOCIETY OF ECONOMIC PALEONTOLOGISTS AND MINERALOGISTS
BEST PAPER AWARDS
THIRTIETH ANNUAL MEETING
JACKSON, MISSISSIPPI**



Elisabeth C. Kosters

THE GCS/SEPM BEST PUBLISHED PAPER AWARD was presented to Elisabeth C. Kosters for co-authoring the paper "Characteristics of Peat Deposits in the Mississippi River Delta Plain."

Elisabeth received her B.S. degree from the University of Gronigen, the Netherlands, and her M.S. at the University of Amsterdam, the Netherlands. She has begun work toward her Ph.D degree at Louisiana State University, Baton Rouge, Louisiana. Since 1981 Elisabeth has been on the research staff of the Louisiana Geological Survey, Baton Rouge, as the Principal Investigator of the project to assess the peat resource of the Louisiana Gulf Coast. She has published several papers concerning the occurrence of peat of south Louisiana; Elisabeth was awarded the Excellence in Presentation Certificate by the Energy Minerals Division of the AAPG for her presentation at the Annual Meeting in Dallas in 1983.

Elisabeth is a member of the Koninklijk Nederlands Geologisch en Mijnbouwkundig Genootschap, International Association of Sedimentologists, Baton Rouge Geological Society, Society of Economic Paleontologists and Mineralogists, and American Association for the Advancement of Science.



Dr. Alan Bailey

THE GCS/SEPM BEST PUBLISHED PAPER AWARD was presented to Dr. Alan Bailey (second author) for co-authoring the paper "Characteristics of Peat Deposits in the Mississippi River Delta Plain."

Dr. Bailey received his B.A. in Geology from the University of Iowa and M.S. and Ph.D degrees from Michigan State University. After graduation, he worked 1 year as a research associate at Vanderbilt University, 10 years teaching and doing research at Marshall University and 1 year as a research associate at the University of Kentucky. Since 1981, Dr. Bailey has held the position of Associate Professor of Geology at the University of Southwestern Louisiana.

Dr. Bailey is a member of the Mineralogical Society, Geological Society of America, International Association of Geochemistry and Cosmochemistry, Society of Economic Paleontologists and Mineralogists, Sigma Xi and the Lafayette Geological Society.



David B. Prior

THE GCS/SEPM EXCELLENCE OF PRESENTATION AWARD

was awarded to Dr. David B. Prior for presentation of the paper "Characteristics of a Deep-Sea Challen on the Middle Mississippi Fan as Revealed by a High-Resolution Survey" by David B. Prior, Charles E. Adams, and James M. Coleman.

A professor in the Coastal Studies Institute, Louisiana State University, David Prior received his B.S. and Ph.D degrees from the Queen's University of Belfast, Northern Ireland, and conducted post-graduate research there. He has held teaching appointments at the Queen's University of Belfast, Louisiana State University, the University of Manitoba, and Clark University in Massachusetts. Since 1979 he has been working full time under contracts with various agencies on aspects of geologic processes and submarine landslides in the Mississippi Delta area and on the continental slopes of the Gulf of Mexico and U.S. Atlantic East Coast. He is a member of American Geophysical Union, Sigma Xi, Baton Rouge Geological Society, and British Geomorphological Research Group, and is the author of approximately seventy papers that have been published in scientific journals.

BYLAWS OF GULF COAST SECTION OF THE SOCIETY OF ECONOMIC PALEONTOLOGISTS AND MINERALOGISTS

ARTICLE 1.—OBJECT

- 1.01 The object of the Gulf Coast Section of the Society of Economic Paleontologists and Mineralogists is to promote the science of stratigraphy in the Gulf Coast states through research in paleontology and sedimentary petrology, especially as it relates to petroleum geology. The Corporation, herein referred to as the "Section", will be closely associated with the Gulf Coast Association of Geological Societies and will cooperate with it and with the local geological societies of which it is composed for the furtherance of mutual objectives.

ARTICLE 2.—MEMBERS

- 2.01 The Section shall have members, associate members, charter members, and honorary members.
- 2.02 Members shall be persons engaged in paleontologic, petrographic or stratigraphic studies that have application to the geology of petroleum, who are members or associate members of the Society of Economic Paleontologists, and Mineralogists and who work or reside in the Gulf Coast province of the states of Texas, Louisiana, Mississippi, Alabama, Georgia or Florida, or whose interest or work is principally within these states. Membership, once obtained, shall not be dependent upon continued residence in the aforementioned states.
- 2.03 Associate members shall be persons engaged in paleontologic, petrographic or stratigraphic studies that have application to the geology of petroleum, who work or reside in the Gulf Coast province of the above mentioned states, and who are not members or associate members of the Society of Economic Paleontologists and Mineralogists. Associates shall enjoy all the privileges of membership, save that they shall not hold office. Election to membership in the Society of Economic Paleontologists and Mineralogists will automatically advance associates to members.
- 2.04 Charter members are those whose applications for membership were received before the first nomination of officers. They shall enjoy all the privileges of members and, hereinafter, are included in all references to "members."
- 2.05 The Council may elect as honorary members persons who have contributed distinguished service to the science of stratigraphy, paleontology or sedimentary petrology, especially as they relate to petroleum geology in the Gulf Coast. Honorary members shall not be required to pay dues.
- 2.06 Each candidate for membership shall submit to the Secretary an application on a form authorized by the Council for this purpose.
- 2.07 New members and associates enrolled after September 15 shall be considered as having paid their dues for the next calendar year.

ARTICLE 3.—COUNCIL AND OFFICERS

- 3.01 Executive authority of the Section is vested in a board of directors known as the "Council" consisting of six members who are duly elected by the members, as follows: President, President-Elect, Secretary, Treasurer, and the most recently retired Past President.
- 3.02 The President shall discharge the usual duties of a president, as well as act as presiding officer at all meetings of the Section and Council. He shall appoint an Editor, Program Chairman, Committee Chairmen and Business Representatives.
- 3.03 The Vice-President shall assume the duties of the President in the case of the absence or disability of the latter. He shall also be Chairman of the Membership Committee and Chairman of the Employment Counseling Committee.
- 3.04 The Secretary shall keep records of the proceedings of the Section and a complete list of the membership. He shall attend to the preparation and mailing of notices, membership application blanks and other materials necessary to the business of the Section.
- 3.05 The Treasurer shall have custody of all funds of the Section. He shall keep account of the receipts and disbursements, and submit his account to the membership at the end of each year.
- 3.06 The Council shall consider all candidates for membership and pass on the qualifications of the applicants; shall have control and management of the affairs and funds of the Section; shall designate the time and place of the Annual Meeting.
- 3.07 The President and Vice-President shall not serve for more than one (1) year, except that if the Vice-President succeeds to the position of Acting President, he may be elected to a full term as President.
- 3.08 In the event that neither the President nor Vice-President is available to serve as presiding officer of the Section, the immediate Past President shall assume the President's duties.
- 3.09 The President-Elect shall serve for one (1) year as such, and in the following year he shall assume the office of President. He shall have no administrative authority except as a member of the Council. He shall acquaint himself with all the details of the office of President and generally prepare himself to serve as President. He shall be responsible for the preparation of the annual meeting for the ensuing year.
- 3.10 A vacancy occurring in the offices of Vice-President, Secretary or Treasurer shall be filled by Council appointment.
- 3.11 A vacancy occurring in the office of President-Elect shall be filled by mail ballot by the membership through a special election called by the Council.

ARTICLE 4.—MEETINGS OF MEMBERS

- 4.01 The Section shall hold at least one stated meeting each year, which shall be known as the Annual Meeting. This meeting will usually be held in conjunction with the Annual Meeting of the Gulf Coast Association of Geological Societies.
- 4.02 The program for the Annual Meeting shall be arranged by the Program Chairman in conjunction with the Chairman designated by the Gulf Coast Association of Geological Societies to arrange for its own program. In general, it will be desirable that the contributions from members of the Section be included in the main program rather than being allotted to a separate session.
- 4.03 At the time of the Annual Meeting, a Business Meeting shall be held for the transaction of Section business.

ARTICLE 5.—AMENDMENT OF BYLAWS

- 5.01 These Bylaws may be amended by a two-thirds vote of returned mail ballots received by the Secretary sixty (60) days after proposal of amendments with provision for vote is mailed to the members. Any proposed amendments must have the approval of a majority of the Council before being submitted to the members.
- 5.02 A petition containing the signatures of twenty (20) active members is considered sufficient to bring before the Council a proposed change in the Bylaws. A majority vote of the Council is also considered sufficient to initiate a proposed change.

ARTICLE 6.—DUES

- 6.01 The fiscal year of the Section shall commence on October 1 and expire of September 30 of the following year.
- 6.02 The annual dues of the members and associates of the Section shall be four dollars (\$4.00). Penalty of fifty cents (.50) shall be assessed for late payments. The fifty cents (.50) late penalty shall be waived upon payment of dues for two more years.
- 6.03 A bill for dues shall be mailed to each member and associate before January 1 of each year. Members and Associates who have not paid their annual dues by April 1 shall be dropped from the membership rolls.
- 6.04 Members and Associates dropped for non-payment of dues may apply to the Council for reinstatement and be reinstated by majority vote of the Council.
- 6.05 Members or Associates may, at their discretion, pay their annual dues in advance for periods of up to five (5) years.

ARTICLE 7.—FINANCIAL PROCEDURE

- 7.01 No officer or member shall enter into contract or disburse any of the Section's funds, without the co-signature of a member of the Council. Disbursal of a sum in excess of Five Hundred Dollars (\$500.00) must be approved by a majority of the Council.

ARTICLE 8.—ELECTIONS

- 8.01 The President shall appoint two (2) nominating committees instructing each committee to submit nominations for President-Elect, Vice-President, Secretary, and Treasurer. These nominations shall be in the Secretary's hands before July 15. If desired, the same person may be nominated by the two committees for the offices of Secretary and Treasurer, but the nominations for President-Elect and Vice President shall not include the names of the same person on the two slates. The nominations of the first committee to file its report will have precedence in case of overlapping nominations, and the other committee shall then be requested to change its nomination. A candidate for office must be an active member and reside in the Gulf Coast at the time of his nomination.
- 8.02 Ballots containing the nominations for officers, arranged alphabetically under each office, shall be prepared by the Secretary and mailed to each member of the Section on or before July 15. The ballots received by the Secretary before September 15 shall be counted by him. Receipt of a plurality of the votes cast for any office shall constitute election. In case of a tie vote, members of the Council shall cast one additional deciding vote.
- 8.03 Results of balloting shall be announced at the Annual Meeting, and the new officers shall enter upon duty at the adjournment of the Meeting.

ARTICLE 9.—PUBLICATIONS

- 9.01 The Section Editor, appointed by the President, shall actively solicit papers from the Section membership for presentation at the Annual Meeting. He shall cooperate with the editor of the Gulf Coast Association of Geological Societies TRANSACTIONS volume in preparing papers delivered at the meeting for publication in this volume. He shall cooperate with the editors of the Society of Economic Paleontologists and Mineralogists' journals by helping to arrange for publication in these periodicals of suitable papers which come to his attention.
- 9.02 Members of the Section may purchase one copy of each Section publication at a discount of 20 percent off the advertised price.

ARTICLE 10.—BUSINESS REPRESENTATIVES

- 10.01 The President shall appoint one representative from each group of members in each local geological society affiliated with the Gulf Coast Association of Geological Societies and in other localities as needed. Each representative shall have an up-to-date list of the members residing in his vicinity. He will notify these members concerning any matters of Section policy which may be relayed to him by the President and shall have the authority to convene a meeting of those members to determine their views concerning Section affairs. He will report the results of such meetings to the President of the Section. He will cooperate with the Section Editor in the soliciting of papers to be presented at the Annual Meeting and with the Chairman of the Membership Committee in recruiting new members for the Section.

ARTICLE 11.—AUDIT

11.01 The President shall appoint an Auditing Committee which shall review the accounts presented by the Treasurer. The approval of the Treasurer's books by the committee shall be required before his final report will be accepted. The Treasurer shall submit a provisional report at the Annual Meeting, and his final audit shall be accomplished not later than 30 days thereafter.

The Constitution of the GCS-SEPM was originally adopted in 1954 and was amended in 1960, 1962, 1966, 1969, 1971, 1972, 1975, and 1981.

The Section was incorporated under the laws of the State of Texas in 1981, and these Bylaws were adopted at that time in place of the original Constitution and its amendments.

These Bylaws embody all of the provisions of the original Constitution and its amendments.

GULF COAST SECTION SEPM HONORARY MEMBERSHIP



Edward Beauregard Picou, Jr.

Edward Beauregard Picou, Jr., Division Paleontologist and Paleontological Advisor, Shell Offshore, Inc., has been employed by Shell Oil Company since he completed his military service in 1957, and he has served his profession well during all these years. He was born on March 26, 1932, in Baton Rouge, Louisiana, received his B.S. degree in Geology from Louisiana State University in 1955, and served as an officer in the U.S. Corps of Engineers from 1955 to 1957.

Ed began his career at Shell as a Paleontologist and advanced to Senior Paleontologist, Staff Paleontologist, Senior Staff Paleontologist, and Division Paleontologist during assignments in Baton Rouge, New Orleans, Lafayette, and Houston. During more than 25 years of professional life in the Gulf Coast, Ed has been a guiding and moving force, not only in Gulf Coast biostratigraphy, but also in the Gulf Coast Section of SEPM, in the national SEPM, and in the geological profession.

He is the author or co-author of several papers in the fields of paleontology, biostratigraphy, and depositional environments of the Gulf Coast Tertiary, including "*Gulf Coast Cenozoic — model for application of stratigraphic concepts to exploration on passive margins*" which was the Gulf Coast SEPM's contribution to SEPM's 50th Anniversary program, and which was chosen the following year as one of the "best of AAPG for SEG" papers.

Ed has served the Gulf Coast Section of SEPM as President (1973-74); Chairman of Technical Program Committee (1978); member of the "Founding Committee" for GCS-SEPM Research Conference Series (1979); member of Research Committee (1979-82); Trustee of the Foundation (1984-86); and member of the Nominating Committee for many years.

For the national SEPM he has served as Vice President (1979-80); Chairman of Technical Program Committee, New Orleans Convention (1976); and Vice Chairman for SEPM, New Orleans Convention (1985). He was SEPM Representative to

the North American Paleontology Convention IV Committee and is currently completing his second term as President of the North American Micropaleontology Section of SEPM.

Besides GCS-SEPM, and national SEPM, Ed's professional memberships include AAPG, New Orleans Geological Society, Baton Rouge Geological Society, Pacific Coast Section of SEPM, Paleontological Society, and Paleontological Research Institute. He is a fellow of the American Association for the Advancement of Science and of the Cushman Foundation for Foraminiferal Research. He has always participated actively in his local geological society — presently the New Orleans Geological Society — where his service has included chairmanships of Membership and Best Paper committees, and chairmanship of the NOGS delegation to the AAPG House of Delegates.

Ed has also served LSU as President of the Geology Alumni Association and member of the Geology Advisory Council, LSU Foundation, and Board of Directors, Museum of Geoscience

Remarkably, Ed Picou has served willingly and ably in all of these capacities while at the same time supervising a large paleontological staff in a very active exploration division of a major oil company. At no time did any of his commitments or responsibilities suffer at the expense of any other. He dedicated himself to doing the best possible job for every committee or association he serves, as well as for his employer. He is an outstanding member of the Gulf Coast geological community who has contributed much to the understanding and applications of biostratigraphy in the Gulf Coast, as well as to the major professional associations which he has served. Excellence and effectiveness have marked every one of his assignments whether as paleontologist, as committee member or chairman, or as an officer of a professional association. He is a dedicated Gulf Coast geologist.

Doris M. Cur

GULF COAST SECTION SEPM HONORARY MEMBERSHIP



Gene B. Martin

Gene B. Martin was born in Amarillo, Texas, on October 31, 1931. He attended Mississippi State University where he received his BS degree in Petroleum Geology in 1953 and MS degree in General Geology in 1954. Following his graduate studies in 1954, Gene taught as an instructor in geology at Mississippi State. The following year he entered military service and served in the U.S. Army until 1957.

Gene began his career in paleontology and stratigraphy in 1957 when he joined Gulf Research in Houston, Texas. Later, he transferred to Gulf Oil Corporation in New Orleans where he continued his work in micropaleontology. Gene resigned from Gulf in 1966 to accept a position in paleontology with Atlantic Richfield Company in Corpus Christi, Texas. This began a long and successful career with Atlantic Richfield. He was promoted to Senior Paleontologist in 1969, and in 1973 Gene relocated to Atlantic Richfield in Houston. Successive promotions have marked his career since that time — Senior Geological Assistant in 1976, Senior Area Paleontologist-Stratigrapher in 1980, and Director of Stratigraphy and Paleontology with ARCO Exploration Company in 1981.

Promotion of his science and a desire to share knowledge and experience with other earth scientists have prompted Gene to publish technical papers in the fields of paleontology, stratigraphy, and petroleum geology. In addition, he has presented papers at numerous geological society meetings in Texas, Louisiana, and Colorado, as well as GCAGS-GCS/SEPM annual meetings and at Woods Hole-Oceanographic Institution.

Throughout his career Gene has been active in professional organizations and currently holds active membership in AAPG, SEPM, Gulf Coast Section-SEPM, and Houston Geological Society.

Gene's membership in the Gulf Coast Section-SEPM spans some 25 years. Never content to merely join an organization, he has always sought to participate and serve. Gene's participa-

tion in the Gulf Coast Section has covered the full range of Section activities. He has served as Business Representative, Program Chairman for the GCS-SEPM annual meeting with GCAGS, and as a member of the Best Paper and Field Trip Committees. Gene was GCS Treasurer during the Section's 1966-1967 term and in 1979-1980 he served as Section President.

Through Gene's foresight and dedicated leadership as President, the Gulf Coast Section undertook new and exciting challenges in its goal of promoting the science of stratigraphy in the Gulf Coast. For in 1980, Gene re-established the Section's annual field trip and conceived the idea of a GCS/SEPM-sponsored research conference. Under his leadership, the First Annual Research Conference, entitled the "Geology of the Woodbine and Tuscaloosa Formations," was held in Houston in December 1980. This conference was a complete success and firmly established the GCS/SEPM's reputation as leader in earth science research activities in the Gulf Coast. As a result of Gene's vision and hard work, the annual research conference is now the premiere event in the Section's busy calendar of annual activities.

Since his tenure as President, and Past President the following year, Gene has continued to be active in a variety of Section business. In particular, he followed the initial research conference effort with service as a member of the Second Annual Research Conference Committee, and in 1983, as co-program chairman, he helped organize the Fourth Annual Research Conference, "The Habitat of Oil and Gas in the Gulf Coast." Currently Gene is chairman of the Fund Raising Committee of the GCS/SEPM Foundation.

It is therefore befitting that the Section recognize the outstanding service, leadership, and dedication that Gene has provided to us with this award of GCS/SEPM Honorary Membership.

W.P.S. Ventress

GULF COAST SECTION SEPM HONORARY MEMBERSHIP



Bob F. Perkins

Bob F. Perkins grew up in Dallas, Texas, and attended Southern Methodist University, from which he received the B.S. (1949) and M.S. (1950) degrees. After two years of residence at the University of Michigan, he taught at Southern Methodist and University of Houston while completing his dissertation (Ph.D., 1956). In 1957 he joined the Shell Oil Company and was assigned to a research group headed by Frank Lozo. Upon the dissolution of that group, he went to Louisiana State University as Professor of Geology and ultimately Chairman of the Department of Geology. In 1975 he returned to the Dallas area as Professor of Geology and Dean of the Graduate School at the University of Texas at Arlington.

Bob's work has been centered on Mesozoic faunas and is distinguished by classic scholarly excellence. His first papers, highly professional and published while a student at Southern Methodist, were on Cretaceous corals. His dissertation was a monograph on Albian faunas and stratigraphy of typical Comanchean units of Texas and Mexico (G.S.A. Memoir 83). Upon joining Shell he turned to the paleontology of reefal facies and became involved in the study of rudists, on which he published several papers, including the morphologic and taxonomic sections of the rudist chapter in the *Treatise on Invertebrate Paleontology*. Exposure to borings, burrows, and similar structures of reefal facies led to extensive research and authoritative publications on ichnofossils. Bob remains active in these areas,

as an individual investigator, guide to student research, and co-laborator with colleagues at U.T. Arlington and elsewhere.

During his nine years at Louisiana State University, Bob became increasingly involved in institutional leadership. He organized field trips, symposia, and special publications. He strengthened and expanded research programs in and ultimately became Chairman of the Department of Geology. This trend in his work accelerated with his move to the University of Texas at Arlington as Dean of the Graduate School, and he has been instrumental in the expansion and improvement of scholarly work there.

Bob is a charter member of the Gulf Coast Section of SEPM. He has served as Vice-President (1978-79), President-Elect (1979-80), President (1980-81), Field Trip Committee Chairman (1979-80), Research Conference Chairman (1980-83), and Foundation Director (1983-present).

As these honors suggest, he has been a pivotal figure in improved and more stable organizational structure, in expansion and sophistication of the field trip program, in origination, guidance, and excellence of the research conference program, and in expansion and stabilization of financial support.

For this service and for his professional stature, Bob Perkins is an honor to the Section and a fitting Honorary Member of the Section.

Charles McNul

GULF COAST SECTION — SEPM

HONORARY MEMBERS

Ester Applin (1964)
Alva C. Ellisore (1964)
Marcus A. Hanna
Henry V. Howe (1964)
Hedwig T. Kniker (1964)
Winnie McGamery (1964)
John R. Sandidge (1964)
J.B. Garrett, Jr. (1965)
E.H. Rainwater (1966)
Henry K. Branislaw Stenzel (1971)
Jules Braunstein (1973)
Grover E. Murray (1973)

Harold V. Andersen (1975)
Lyman D. Toulmin (1975)
Doris M. Curtis (1977)
Stuart A. Levinson (1978)
Fred L. Smith, Jr. (1978)
Charles W. Stuckey (1978)
William R. Paine (1980)
Frank E. Lozo, Jr. (1981)
Gene B. Martin (1984)
Bob F. Perkins (1984)
Edward B. Picou, Jr. (1984)

GULF COAST SECTION — SEPM

PAST OFFICERS

PRESIDENT	VICE-PRESIDENT	SECRETARY	TREASURER
1953-1954	Stuart A. Levinson	Grover E. Murray	William H. Akers
1954-1955	Charles W. Stuckey, Jr.	E.H. Rainwater	William H. Akers
1955-1956	E.H. Rainwater	Frank S. Westmoreland	Hugh A. Bernard
1956-1957	Lloyd M. Pyeatt	J.O. Colle	H. Dillingham, Jr.
1957-1958	J.O. Colle	Fred L. Smith, Jr.	Harold V. Andersen
1958-1959	Marcus A. Hanna	Claude M. Quigley	Fred E. Smith
1959-1960	David E. Pope	A.D. Ellis, Jr.	Gordon C. Munsey
1960-1961	Claude M. Quigley	Harold V. Andersen	E. Ann Butler
1961-1962	Harold V. Andersen	Theodore D. Cook	Benjamin J. Petrusek
1962-1963	Albert D. Warren	Ernest H. Horton	Blair S. Parrott
1963-1964	Lyman D. Toulmin	E. Ann Butler	Charles C. Albers
1964-1965	Howard L. Tipsword	Benjamin J. Petrusek	D. Jeter Smith
1965-1966	John B. Dunlap, Jr.	John J.W. Rogers	M. Ray Bane
1966-1967	Hubert C. Skinner	Richard P. Zingula	Gene Ross Kellough
1967-1968	Benjamin J. Petrusek	Dan McGregor	Garrett Briggs
1968-1969	William A. Atlee	Edgar B. O'Quinn	James W. Fowler
1969-1970	Fred L. Smith, Jr.	Kenneth L. Loep	Robert K. Sylvester
1970-1971	Jules Braunstein	Douglas E. Jones	Walter H. Trenchard
1971-1972	William W. Hay	William E. Steinkraus	Karl J. Koenig
1972-1973	C. Wylie Poag, Jr.	Emmett R. Adams	Gerald R. Stude
1973-1974	Edward B. Picou, Jr.	Walter H. Trenchard	Lawrence C. Menconi
1974-1975	Emmett R. Adams	Clifton A. Couture	Herbert A. Elliott, Jr.
1975-1976	James L. Lamb	Lawrence C. Menconi	William S. Grubb
1976-1977	Clifton A. Couture	Eleanor T. Caldwell	Sherwood W. Wise, Jr.
1977-1978	Gerald R. Stude	William P.S. Ventress	Gary R. Roberson
1978-1979	Willard P. Leutze	Bob F. Perkins	Walter P. Kessinger
1979-1980	Gene B. Martin	John L. Carney	Mary Ann Rafle
1980-1981	Bob F. Perkins	Don G. Bebout	Sheila C. Barnette
1981-1882	William P.S. Ventress	Kenneth A. Hodgkinson	Brian J. O'Neill
1982-1983	John L. Carney	Ernest A. Mancini	Susan J. Conger Morris
1983-1984	Don G. Bebout	Michael J. Nault	Susan J. Conger Morris
			Frank V. Stevensen
			Fred L. Smith, Jr.
			Eleanor T. Caldwell
			Eleanor T. Caldwell
			William G. Parker
			Bernard L. Hill, Jr.
			H.A. Chun
			Edward Marks
			Albert D. Warren
			Henry H. Phillips
			John E. Kilgore
			Emmett R. Adams
			Charles B. Morris
			Gene B. Martin
			Herbert A. Elliott, Jr.
			William E. Steinkraus
			C. Wylie Poag, Jr.
			Robert N. Davids
			Gerald R. Stude
			Gerald R. Stude
			Joan B. Strough
			J. Loyd Tuttle, Jr.
			Doris M. Curtis
			John L. Carney
			Joseph E. Boudreaux
			George C. Esker, III
			Kenneth A. Hodgkinson
			Arthur S. Waterman
			Ted Karmen
			Kurt Geitzenauer
			Kevin C. Kilmartin
			Nelson B. Yoder

GULF COAST ASSOCIATION OF GEOLOGICAL SOCIETIES

PUBLICATION LIST AND ORDER FORM

All GCAGS *Transactions* and a variety of other GCAGS publications are available. To facilitate your order, GCAGS will accept either *Visa* or *Master Card* in addition to checks for payment of all orders.

GCAGS TRANSACTIONS PRICE

- Volume 1 (1951) New Orleans\$15.00
- Volume 2 (1952) Corpus Christi..... 10.00
- Volume 3 (1953) Shreveport 10.00
- Volume 4 (1954) Houston 10.00
- Volume 5 (1955) Biloxi 15.00
- Volume 6 (1956) San Antonio 17.50
- Volume 7 (1957) New Orleans 20.00
- Volume 8 (1958) Corpus Christi..... 17.50
- Volume 9 (1959) Houston 20.00
- Volume 10 (1960) Biloxi 10.00
- Volume 11 (1961) San Antonio 10.00
- Volume 12 (1962) New Orleans 25.00
- Volume 13 (1963) Shreveport 15.00
- Volume 14 (1964) Corpus Christi..... 20.00
- Volume 15 (1965) Houston 15.00
- Volume 16 (1966) Lafayette 20.00
- Volume 17 (1967) San Antonio 11.00
- Volume 18 (1968) Jackson 10.00
- Volume 19 (1969) Miami 10.00
- Volume 20 (1970) Shreveport 10.00
- Volume 21 (1971) New Orleans 15.00
- Volume 22 (1972) Corpus Christi..... 15.00
- Volume 23 (1973) Houston 20.00
- Volume 24 (1974) Lafayette 15.00
- Volume 25 (1975) Jackson 17.50
- Volume 26 (1976) Shreveport 17.50
- Volume 27 (1977) Austin 25.00
- Volume 28 (1978) New Orleans 30.00
- Volume 29 (1979) San Antonio 25.00
- Volume 30 (1980) Lafayette 30.00
- Volume 31 (1981) Corpus Christi..... 25.00
- Supplement to Volume 31 6.50
- Volume 31 and Supplement (combination price) 25.00
- Volume 32 (1982) Houston 30.00
- Volume 33 (1983) Jackson 30.00

ON
SALE
NEW

GCAGS MAPS

- Fault and Salt Map of South Louisiana 52" x 106" edited by W.E. Wallace, Jr. (1966)\$20.00 rolled
- Faults of South Central Texas, Map compiled by Delos R. Tucker (1967) 2.00
- Bathymetry of the Gulf of Mexico, Map of Elazar Uchupi (1967) 2.00
- Lower Wilcox Map, Reprinted from Volume 17 (1967) 2.00

BIBLIOGRAPHIES AND INDEX OF GULF COAST GEOLOGY PRICE

- Bibliography of Gulf Coast Geology (1970) Volumes 1 & 2 Set (edition for pre-1900 to 1968)\$ 6.00
- Bibliography of Gulf Coast Geology (1976) Volume 3 (edition for 1969-74)..... 4.00
- Bibliography of Gulf Coast Geology (1982) Volume 4 (edition for 1975-1979)..... 10.00
- Bibliography of Gulf Coast Geology Complete Set, Volumes 1 through 4 inclusive 17.50
- Comprehensive Index of GCAGS publications
- Volume 1 (1966) Covers 1950-1965... 2.50
- Volume 2 (1983) Covers 1966-1981... 12.00

NEW

SPECIAL GCAGS PUBLICATION SERIES

Readings in Gulf Coast Geology

- Volume 1. "Depositional Systems in the Gulf Coast." Compiled by Edward C. Roy, Jr. Eleven papers excerpted from GCAGS *Transactions* that focus on this subject. (December, 1980)\$10.00
- Volume 2. "Petroleum Geology of the Cenozoic of the Central Gulf Coast, with Special Emphasis on the Miocene." Compiled by Raymond W. Stephens. Ten papers excerpted from GCAGS *Transactions* that focus on this subject. (September, 1981) 10.00
- Volume 3. "Biostratigraphy and Paleocology of Gulf Coast Cenozoic Foraminifera." Compiled by Samuel P. Ellison, Jr. Fourteen papers excerpted from GCAGS *Transactions* that focus on this subject. (May, 1982) 10.00




Total of Publications Requested \$ _____

Texas Residents: Include 5% Sales Tax \$ _____

Foreign Orders: Add \$2.00/Volume \$ _____

TOTAL \$ _____

**PUBLICATION ORDER FORM
GULF COAST SECTION
SOCIETY OF ECONOMIC PALEONTOLOGISTS
AND MINERALOGISTS**

	No. of copies	Price	Total Amount
TYPE LOCALITIES OF THE GULF COAST			
Unit I 19 Localities: L. Miocene to L.K., AL-MS-LA-TX	_____	\$ 4.00	\$ _____
Unit II 20 Localities: U. Eocene to U.K., Florida to Tx	_____	4.00	_____
Unit III 15 Localities: Eocene to L.K., MS-LA-TX	_____	4.00	_____
FIELD TRIP GUIDEBOOKS			
Middle Eocene, Houston Co., Texas, 1961	_____	5.00	_____
Stratigraphic Study of Pleistocene to Middle Eocene, Houston, Texas, 1963	_____	5.00	_____
Geological Field Guide to Neogene Sections in Jamaica, West Indies, 1969	_____	4.00	_____
Guatemala (including maps of Mayan ruins), 1974	_____	6.50	_____
 ON SALE Lower Cretaceous in Moffat Mound Area near Lake Belton, Bell Co., Texas, 1982 (reprint of 1979 edition)	_____	3.00 6.00	_____
Middle Eocene Coastal Plain and Nearshore Deposits of East Texas: A Field Guide to the Queen City Formation and Related Papers, 1980	_____	10.00	_____
SPECIAL VOLUMES			
 ON SALE Proceedings of Symposium on Calcareous Nannofossils, 1973	_____	3.00 6.00	_____
Geology of the Woodbine and Tuscaloosa Formations, Program and Expanded Abstracts with Illustrations, First Annual Research Conference, 1980	_____	6.00	_____
Recognition of Shallow-Water Versus Deep-Water Sedimentary Facies in Growth-structure Affected Formations of the Gulf Coast Basin, Program and Expanded Abstracts with Illustrations, Second Annual Research Conference, 1981	_____	10.00	_____
PUBLICATIONS SPONSORED BY THE GULF COAST SECTION—SEPM FOUNDATION			
The Jurassic of the Gulf Rim, Program and Expanded Abstracts with Illustrations, Third Annual Research Conference, 1982	_____	14.00	_____
Habitat of Oil and Gas in the Gulf Coast, Program and Abstracts, Fourth Annual Research Conference, 1983	_____	10.00	_____
Deltaic Sedimentation on the Louisiana Coast, 1982	_____	10.00	_____
Upper Cretaceous Lithostratigraphy and Biostratigraphy in Northeast Mississippi, Southwest Tennessee and Northwest Alabama, Shelf Chalks and Coastal Clastics, Spring Field Trip, 1983	_____	10.00	_____
Lower Cretaceous Carbonate Strata in the Moffat Mound Area near Lake Belton, Bell Co., Texas, (A Field Guide), 1984	_____	6.50	_____
Upper Jurassic and Lower Cretaceous Carbonate Platform and Basin Systems, Monterrey-Salttillo Area, Northeast Mexico, (A Field Guide), 1984	_____	15.00	_____
 NEW Geology of the Permian Shelf Margin-to-Basin Transition of the Western Escarpment, Guadalupe Mountains, Texas (A Field Guide), 1984	_____	20.00	_____
The Jurassic of the Gulf Rim, Edited by W.P.S. Ventress, Don Bebout, Bob F. Perkins, and Clyde H. Moore, Softbound Book, 426 p., over 300 illustrations, 1984	_____	30.00	_____

ALL ORDERS MUST BE PREPAID.
ENCLOSE CHECK OR CREDIT CARD INFORMATION.

Make check payable to **Earth Enterprises**
Mail to: **P.O. Box 672, Austin, TX 78767**
Telephone: **521/345-3007**

SHIPPING INFORMATION

Name _____

Address _____

City/State _____ Zip Code _____

(PRICES SUBJECT TO CURRENT INVENTORY)

Total of Publications Requested \$ _____

Texas Residents: Include 5% Sales Tax \$ _____

Foreign Orders: Add \$2.00/Volume \$ _____

TOTAL \$ _____

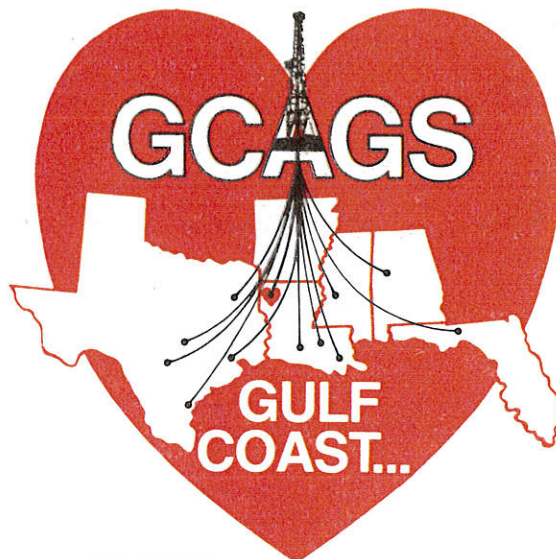
Master Card Visa

Card Expiration _____

Card Account
Number Here

--	--	--	--	--	--	--	--	--	--	--	--	--	--	--	--	--	--	--	--	--

Signature _____



**ENERGY HEART
OF THE NATION**

ALABAMA GEOLOGICAL SOCIETY
AUSTIN GEOLOGICAL SOCIETY
BATON ROUGE GEOLOGICAL SOCIETY
CORPUS CHRISTI GEOLOGICAL SOCIETY
EAST TEXAS GEOLOGICAL SOCIETY
HOUSTON GEOLOGICAL SOCIETY

LAFAYETTE GEOLOGICAL SOCIETY
MISSISSIPPI GEOLOGICAL SOCIETY
NEW ORLEANS GEOLOGICAL SOCIETY
SHREVEPORT GEOLOGICAL SOCIETY
SOUTHEASTERN GEOLOGICAL SOCIETY
SOUTH TEXAS GEOLOGICAL SOCIETY